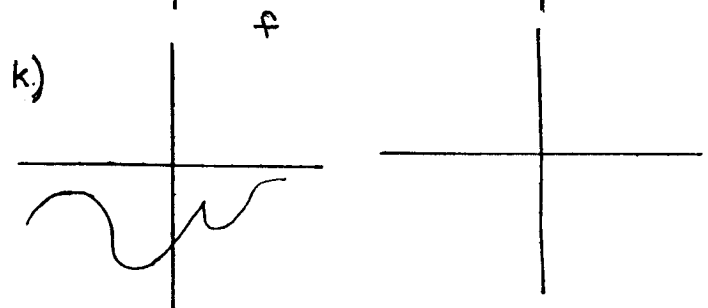
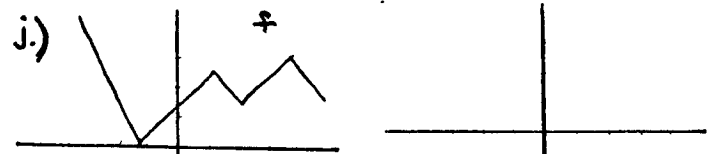
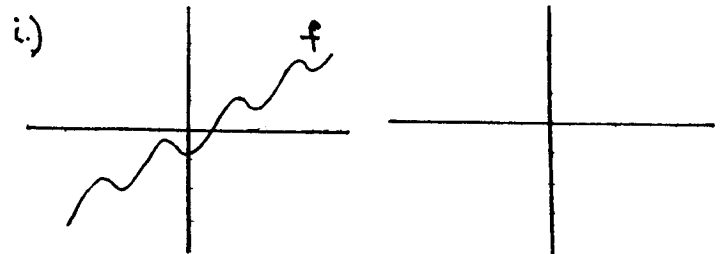
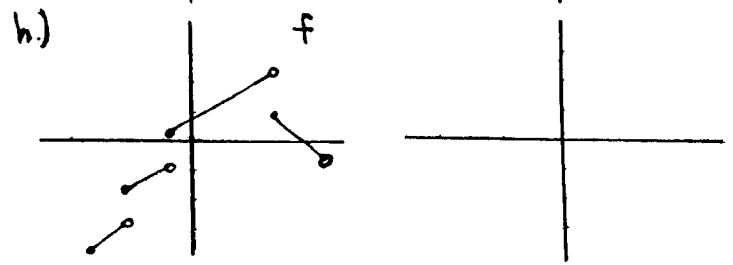
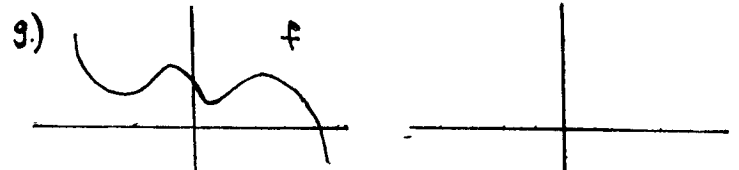
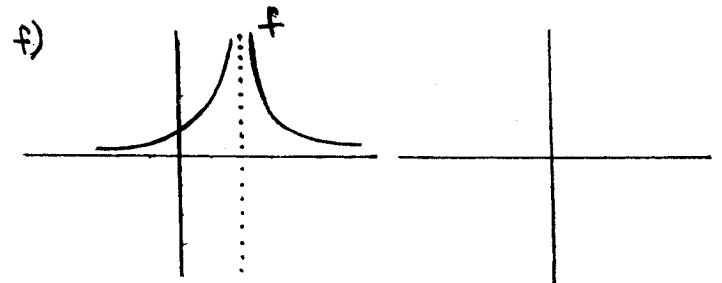
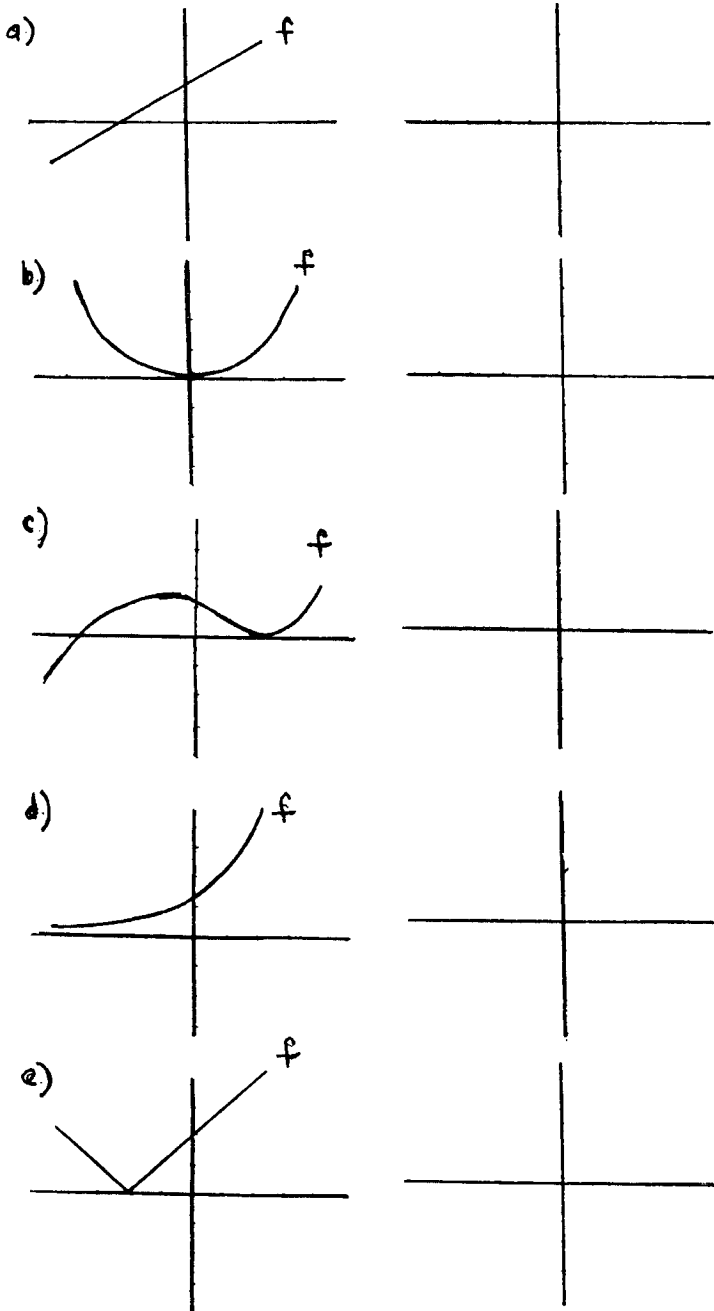
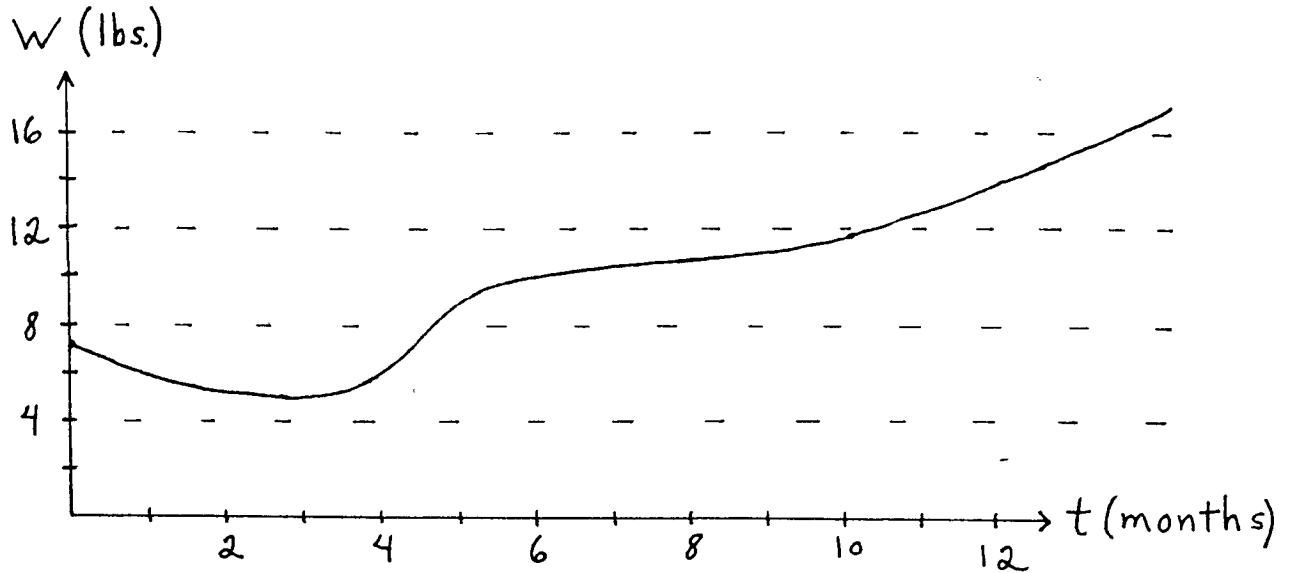


1. Use the given graph of function f to sketch a graph of its derivative, f' .



2. The following chart represents the weight W (lbs.) of a newborn baby as a function of time t (months).



- What is the baby's weight at birth? after 3 months? after 1 year?
- What is an estimate of the baby's growth rate (lbs./month) at birth? after 3 months? after 1 year?
- When is the baby growing at the fastest rate during its first year of life and what is an estimate for this rate?