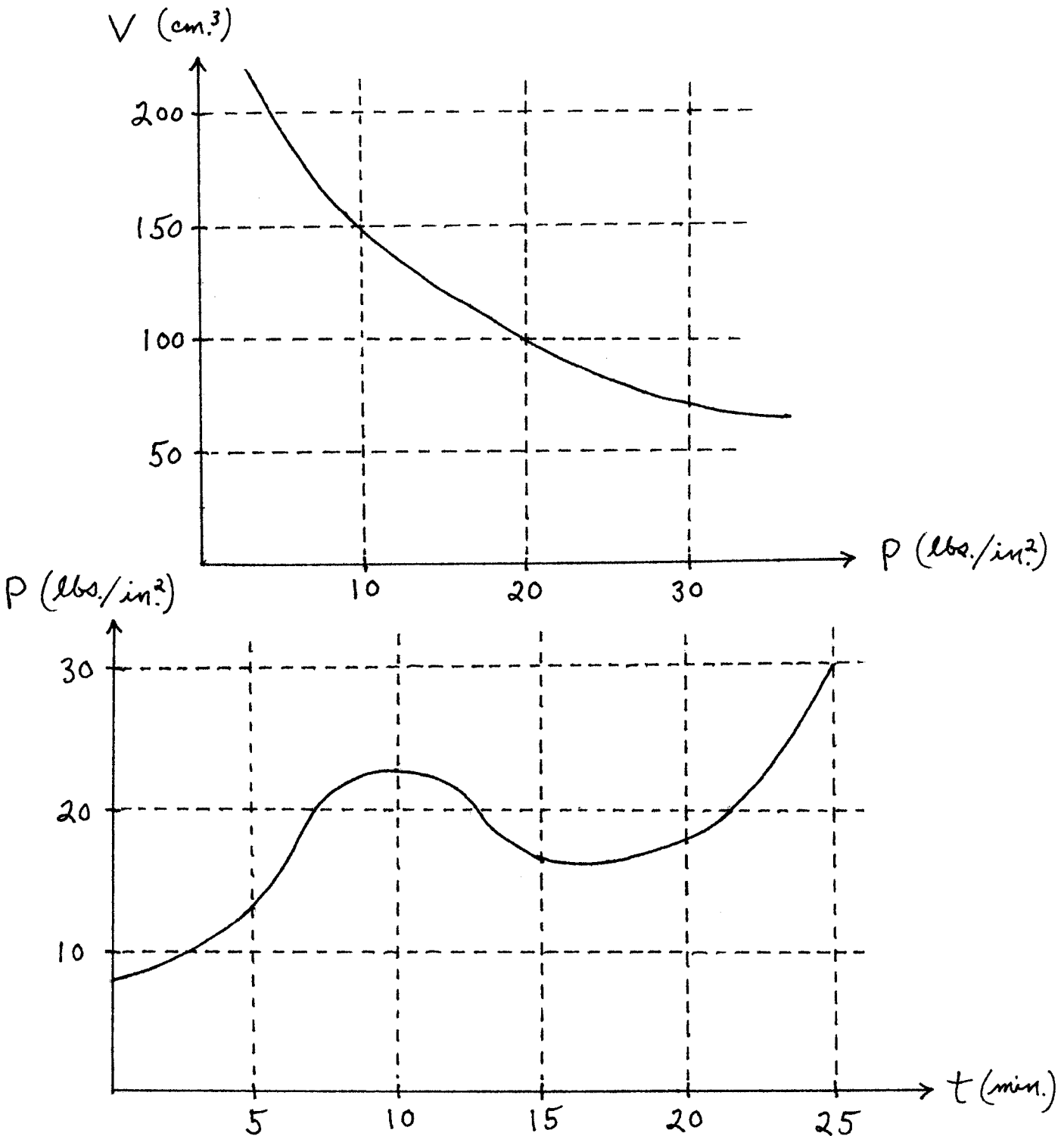


Math 16A

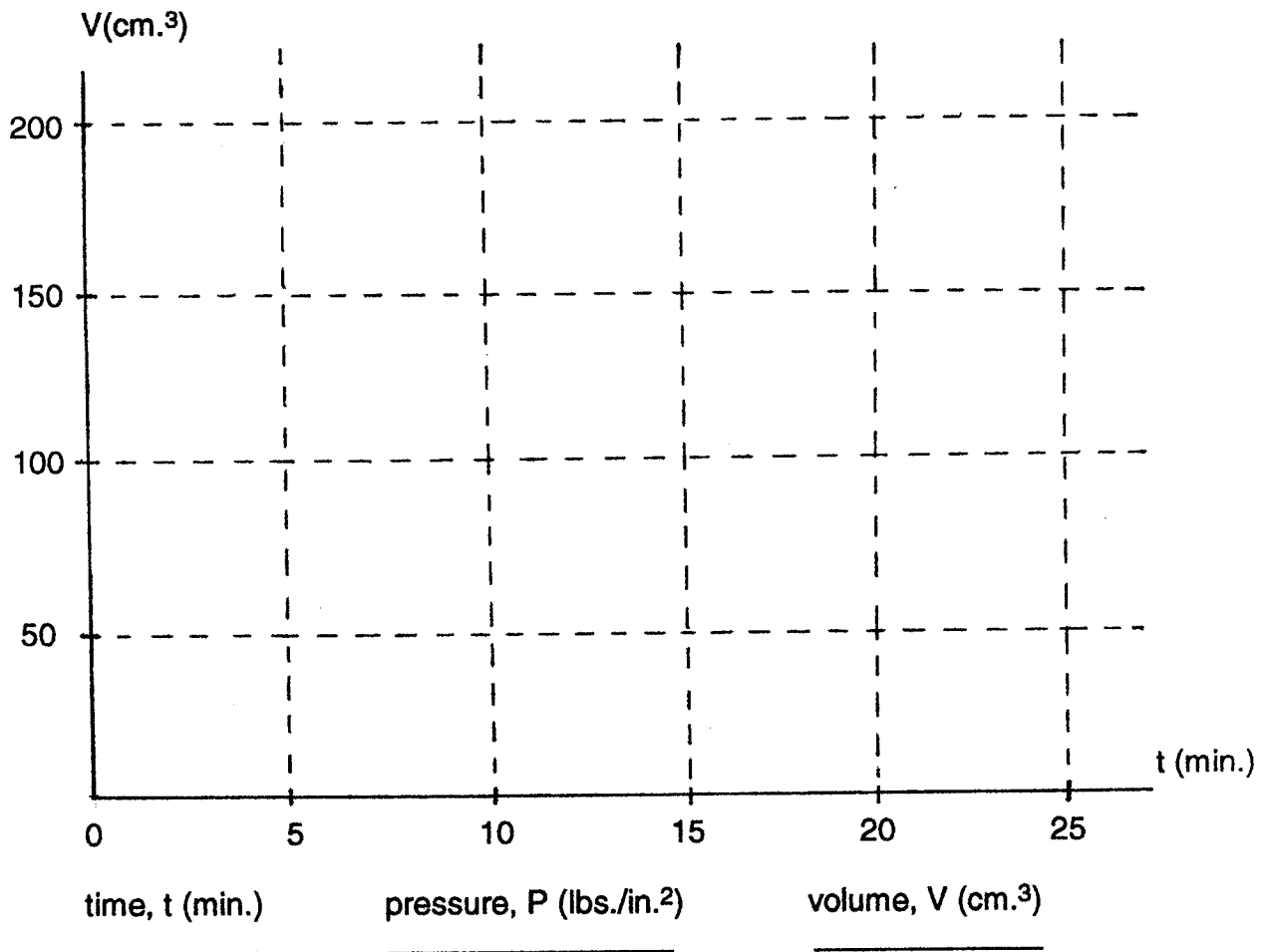
Kouba

A Practical Example of Functional Composition

According to Boyle's Law, at a constant temperature the volume V occupied by a fixed quantity of gas is inversely proportional to the applied pressure P . Assume that for a particular sample we have the following experimental relationships between volume V (cm^3) and pressure P (lbs./in.^2) as well as between pressure P (lbs./in.^2) and time t (min.).



Use the graphical information on the previous page to sketch the relationship between volume V and time t . (Note that this will represent the graph of the functional composition $V = f(P) = f(g(t))$.)



- 0
- 5
- 10
- 15
- 20
- 25