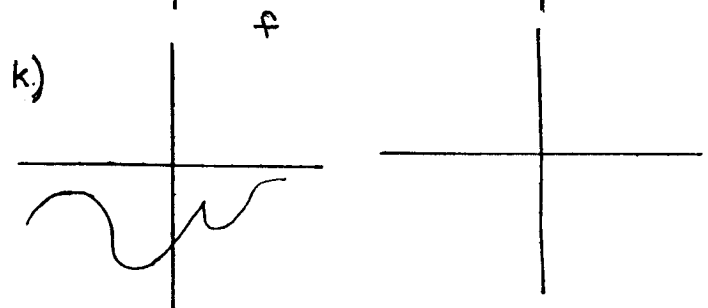
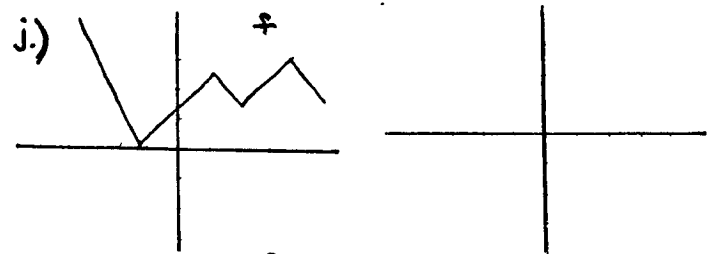
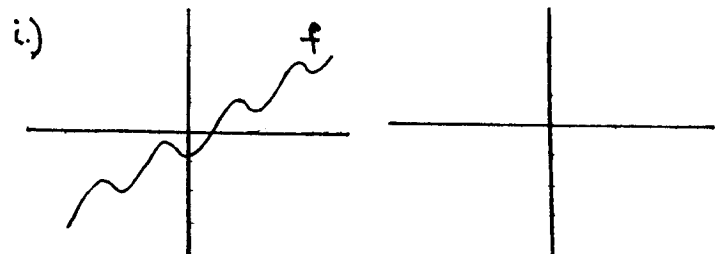
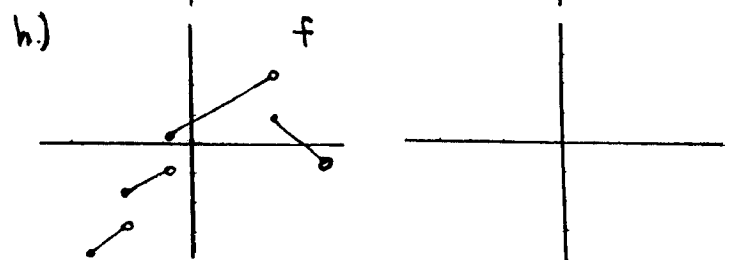
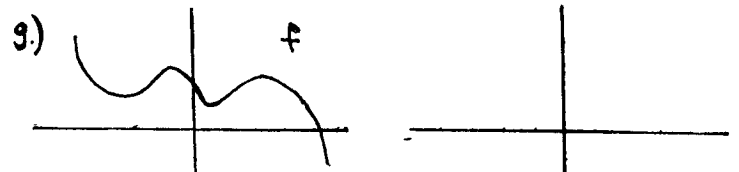
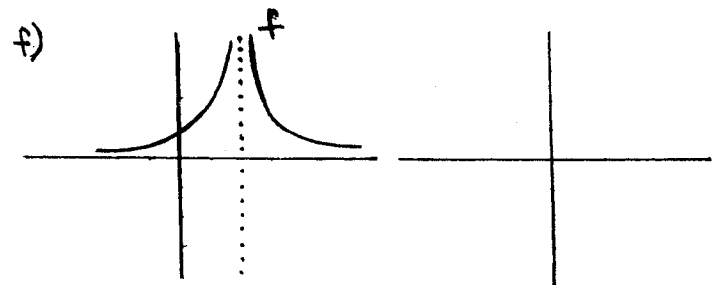
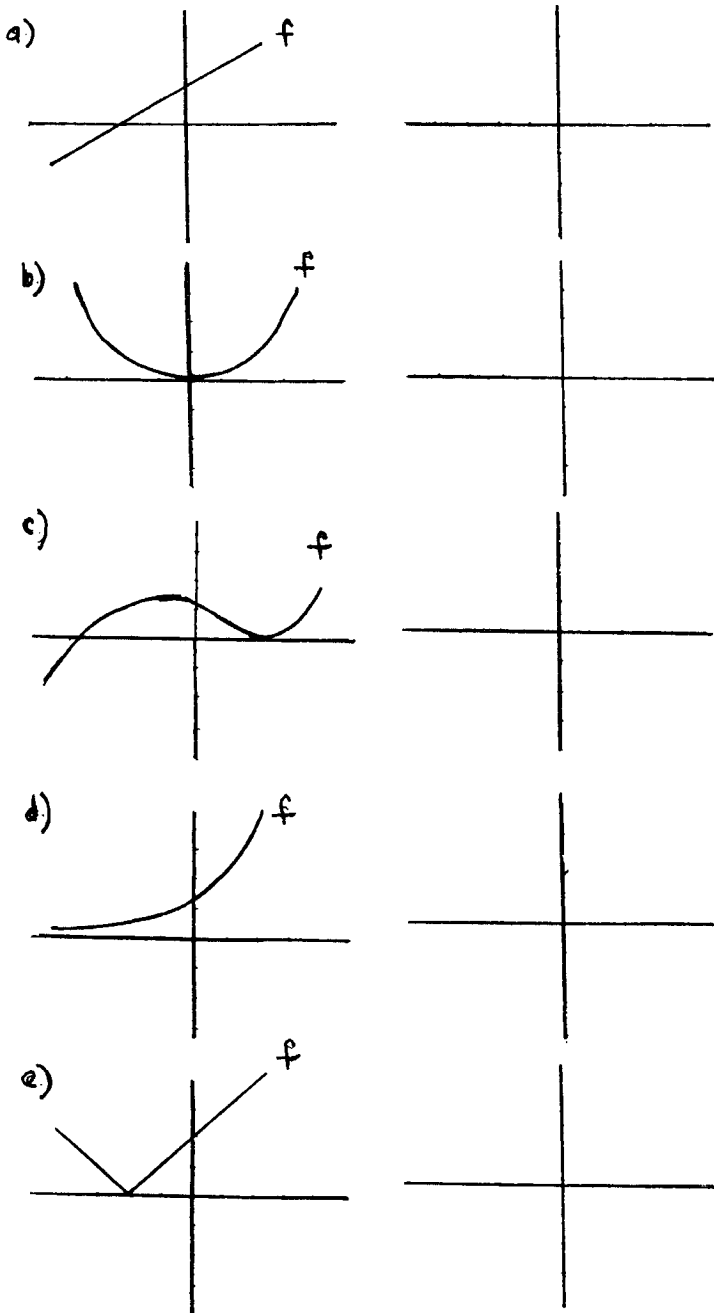
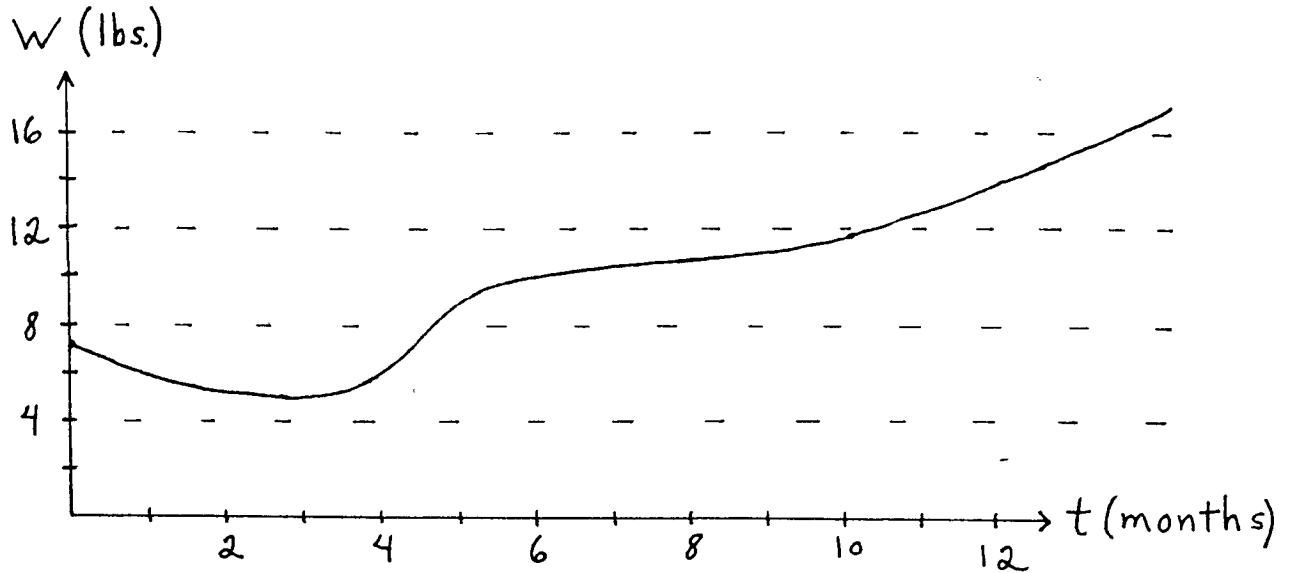


1. Use the given graph of function  $f$  to sketch a graph of its derivative,  $f'$ .



2. The following chart represents the weight  $W$  (lbs.) of a newborn baby as a function of time  $t$  (months).



- What is the baby's weight at birth? after 3 months? after 1 year?
- What is an estimate of the baby's growth rate (lbs./month) at birth? after 3 months? after 1 year?
- When is the baby growing at the fastest rate during its first year of life and what is an estimate for this rate?