

THE LAPLACE TRANSFORM OF THE CUT-AND-JOIN EQUATION AND THE BOUCHARD-MARIÑO CONJECTURE ON HURWITZ NUMBERS

BERTRAND EYNARD, MOTOHICO MULASE, AND BRADLEY SAFNUK

ABSTRACT. We calculate the Laplace transform of the cut-and-join equation of Goulden, Jackson and Vakil. The result is a polynomial equation that has the topological structure identical to the Mirzakhani recursion formula for the Weil-Petersson volume of the moduli space of bordered hyperbolic surfaces. We find that the direct image of this Laplace transformed equation via the inverse of the Lambert W-function is the topological recursion formula for Hurwitz numbers conjectured by Bouchard and Mariño using topological string theory.

CONTENTS

1.	Introduction	1
2.	The Laplace transform of the ELSV formula	6
3.	The cut-and-join equation and its Laplace transform	9
4.	The Bouchard-Mariño recursion formula for Hurwitz numbers	14
5.	Residue calculation	19
6.	Analysis of the Laplace transforms on the Lambert curve	22
7.	Proof of the Bouchard-Mariño topological recursion formula	28
	Appendix. Examples of linear Hodge integrals and Hurwitz numbers	31
	References	32

1. INTRODUCTION

The purpose of this paper is to give a proof of the Bouchard-Mariño conjecture [3] on Hurwitz numbers using the Laplace transform of the celebrated *cut-and-join equation* of Goulden, Jackson, and Vakil [17, 43]. The cut-and-join equation, which seems to be essentially known to Hurwitz [23], expresses the Hurwitz number of a given genus and profile (partition) in terms of those corresponding to profiles modified by either *cutting* a part into two pieces or *joining* two parts into one. This equation holds for an arbitrary partition μ . We calculate the Laplace transform of this equation with μ as the summation variable. The result is a *polynomial equation* [38].

A *Hurwitz cover* is a holomorphic mapping $f : X \rightarrow \mathbb{P}^1$ from a connected nonsingular projective algebraic curve X of genus g to the projective line \mathbb{P}^1 with only simple ramifications except for $\infty \in \mathbb{P}^1$. Such a cover is further refined by specifying its *profile*, which is a partition $\mu = (\mu_1 \geq \mu_2 \geq \dots \geq \mu_\ell > 0)$ of the degree of the covering $\deg f = |\mu| = \mu_1 + \dots + \mu_\ell$. The length $\ell(\mu) = \ell$ of this partition is the number of points in the inverse image $f^{-1}(\infty) = \{p_1, \dots, p_\ell\}$ of ∞ . Each part μ_i gives a local description of the map f , which is given by $z \mapsto z^{\mu_i}$ in terms of a local coordinate z of X around p_i . The number $h_{g,\mu}$ of topological types of Hurwitz covers of given genus g and profile μ ,

2000 *Mathematics Subject Classification.* 14H10, 14N10, 14N35; 05A15, 05A17; 81T45.
 Saclay preprint number: IPHT T09/101.

counted with the weight factor $1/|\text{Aut}f|$, is the *Hurwitz number* we shall deal with in this paper. A remarkable formula due to Ekedahl, Lando, Shapiro and Vainshtein [8, 21, 41] relates Hurwitz numbers and Gromov-Witten invariants. For genus $g \geq 0$ and a partition μ subject to the stability condition $2g - 2 + \ell(\mu) > 0$, the ELSV formula states that

$$(1.1) \quad h_{g,\mu} = \frac{(2g - 2 + \ell(\mu) + |\mu|)!}{|\text{Aut}(\mu)|} \prod_{i=1}^{\ell(\mu)} \frac{\mu_i^{\mu_i}}{\mu_i!} \int_{\overline{\mathcal{M}}_{g,\ell(\mu)}} \frac{\Lambda_g^\vee(1)}{\prod_{i=1}^{\ell(\mu)} (1 - \mu_i \psi_i)},$$

where $\overline{\mathcal{M}}_{g,\ell}$ is the Deligne-Mumford moduli stack of stable algebraic curves of genus g with ℓ distinct marked points, $\Lambda_g^\vee(1) = 1 - c_1(\mathbb{E}) + \cdots + (-1)^g c_g(\mathbb{E})$ is the alternating sum of Chern classes of the Hodge bundle \mathbb{E} on $\overline{\mathcal{M}}_{g,\ell}$, ψ_i is the i -th tautological cotangent class, and $\text{Aut}(\mu)$ denotes the group of permutations of equal parts of the partition μ . The linear Hodge integrals are the rational numbers defined by

$$\langle \tau_{n_1} \cdots \tau_{n_\ell} c_j(\mathbb{E}) \rangle = \int_{\overline{\mathcal{M}}_{g,\ell}} \psi_1^{n_1} \cdots \psi_\ell^{n_\ell} c_j(\mathbb{E}),$$

which is 0 unless $n_1 + \cdots + n_\ell + j = 3g - 3 + \ell$. To present our main theorem, let us introduce a series of polynomials $\hat{\xi}_n(t)$ of degree $2n + 1$ in t for $n \geq 0$ by the recursion formula

$$\hat{\xi}_n(t) = t^2(t - 1) \frac{d}{dt} \hat{\xi}_{n-1}(t)$$

with the initial condition $\hat{\xi}_0(t) = t - 1$. This differential operator appears in [19]. The Laplace transform of the cut-and-join equation gives the following formula.

Theorem 1.1 ([38]). *Linear Hodge integrals satisfy recursion relations given as a series of equations of symmetric polynomials in ℓ variables t_1, \dots, t_ℓ :*

$$(1.2) \quad \sum_{n_L} \langle \tau_{n_L} \Lambda_g^\vee(1) \rangle_{g,\ell} \left((2g - 2 + \ell) \hat{\xi}_{n_L}(t_L) + \sum_{i=1}^{\ell} \frac{1}{t_i} \hat{\xi}_{n_i+1}(t_i) \hat{\xi}_{L \setminus \{i\}}(t_{L \setminus \{i\}}) \right) \\ = \sum_{i < j} \sum_{m, n_{L \setminus \{i,j\}}} \langle \tau_m \tau_{n_{L \setminus \{i,j\}}} \Lambda_g^\vee(1) \rangle_{g,\ell-1} \hat{\xi}_{n_{L \setminus \{i,j\}}}(t_{L \setminus \{i,j\}}) \frac{\hat{\xi}_{m+1}(t_i) \hat{\xi}_0(t_j) t_i^2 - \hat{\xi}_{m+1}(t_j) \hat{\xi}_0(t_i) t_j^2}{t_i - t_j} \\ + \frac{1}{2} \sum_{i=1}^{\ell} \sum_{n_{L \setminus \{i\}}} \sum_{a,b} \left(\langle \tau_a \tau_b \tau_{n_{L \setminus \{i\}}} \Lambda_{g-1}^\vee(1) \rangle_{g-1,\ell+1} \right. \\ \left. + \sum_{\substack{\text{stable} \\ g_1+g_2=g \\ I \sqcup J=L \setminus \{i\}}} \langle \tau_a \tau_{n_I} \Lambda_{g_1}^\vee(1) \rangle_{g_1,|I|+1} \langle \tau_b \tau_{n_J} \Lambda_{g_2}^\vee(1) \rangle_{g_2,|J|+1} \right) \hat{\xi}_{a+1}(t_i) \hat{\xi}_{b+1}(t_i) \hat{\xi}_{n_{L \setminus \{i\}}}(t_{L \setminus \{i\}}),$$

where $L = \{1, 2, \dots, \ell\}$ is an index set, and for a subset $I \subset L$, we denote

$$t_I = (t_i)_{i \in I}, \quad n_I = \{n_i \mid i \in I\}, \quad \tau_{n_I} = \prod_{i \in I} \tau_{n_i}, \quad \hat{\xi}_{n_I}(t_I) = \prod_{i \in I} \hat{\xi}_{n_i}(t_i).$$

The last summation in the formula is taken over all partitions of g and decompositions of L into disjoint subsets $I \sqcup J = L$ subject to the stability condition $2g_1 - 1 + |I| > 0$ and $2g_2 - 1 + |J| > 0$.

Remark 1.2. We note a similarity of the above formula and the Mirzakhani recursion formula for the Weil-Petersson volume of the moduli space of bordered hyperbolic surfaces of genus g with ℓ closed geodesic boundaries [35, 36].

- (1) There is no a priori reason for the Laplace transform to be a *polynomial* equation.
- (2) The above formula is a *topological recursion*. For an algebraic curve of genus $g \geq 0$ and $\ell \geq 1$ distinct marked points on it, the absolute value of the Euler characteristic of the ℓ -punctured Riemann surface, $2g - 2 + \ell$, defines a *complexity* of the moduli space $\overline{\mathcal{M}}_{g,\ell}$. Eqn.(1.2) gives an effective method of calculating the linear Hodge integrals of complexity $n > 0$ from those with complexity $n - 1$.
- (3) When we restrict (1.2) to the homogeneous highest degree terms, the equation reduces to the Witten-Kontsevich theorem of ψ -class intersections [7, 27, 44].

Let us explain the background of our work. Independent of the recent geometric and combinatorial works [17, 35, 36, 43], a theory of topological recursions has been developed in the matrix model/random matrix theory community [9, 13]. Its culmination is the topological recursion formula established in [13]. There are three ingredients in this theory: the Cauchy differentiation kernel (which is referred to as “the Bergman Kernel” in [3, 13]) of an analytic curve $C \subset \mathbb{C}^2$ in the xy -plane called a *spectral curve*, the standard holomorphic symplectic structure on \mathbb{C}^2 , and the ramification behavior of the projection $\pi : C \rightarrow \mathbb{C}$ of the spectral curve to the x -axis. When C is hyperelliptic whose ramification points are all real, the topological recursion solves 1-Hermitian matrix models for the potential function that determines the spectral curve. It means that the formula recursively computes all n -point correlation functions of the resolvent of random Hermitian matrices of an arbitrary size. By choosing a particular spectral curve of genus 0, the topological recursion [10, 13, 14] recovers the Virasoro constraint conditions for the ψ -class intersection numbers $\langle \tau_{n_1} \cdots \tau_{n_\ell} \rangle$ due to Witten [44] and Kontsevich [27], and the mixed intersection numbers $\langle \kappa_1^{m_1} \kappa_2^{m_2} \cdots \tau_{n_1} \cdots \tau_{n_\ell} \rangle$ due to Mulase-Safnuk [37] and Liu-Xu [31]. Based on the work by Mariño [33] and Bouchard, Klemm, Mariño and Pasquetti [2] on *remodeling* the B-model topological string theory on the mirror curve of a toric Calabi-Yau 3-fold, Bouchard and Mariño [3] conjecture that when one uses the *Lambert curve*

$$(1.3) \quad C = \{(x, y) \mid x = ye^{-y}\} \subset \mathbb{C}^* \times \mathbb{C}^*$$

as the spectral curve, the topological recursion formula of Eynard and Orantin should compute the generating functions

$$(1.4) \quad \begin{aligned} H_{g,\ell}(x_1, \dots, x_\ell) &= \sum_{\mu: \ell(\mu)=\ell} \frac{\mu_1 \mu_2 \cdots \mu_\ell}{(2g - 2 + \ell + |\mu|)!} h_{g,\mu} \sum_{\sigma \in S_\ell} \prod_{i=1}^{\ell} x_{\sigma(i)}^{\mu_i - 1} \\ &= \sum_{n_1 + \cdots + n_\ell \leq 3g - 3 + \ell} \langle \tau_{n_1} \cdots \tau_{n_\ell} \Lambda_g^\vee(1) \rangle \prod_{i=1}^{\ell} \sum_{\mu_i=1}^{\infty} \frac{\mu_i^{\mu_i + 1 + n_i}}{\mu_i!} x_i^{\mu_i - 1} \end{aligned}$$

of Hurwitz numbers for all $g \geq 0$ and $\ell > 0$. Here the sum in the first line is taken over all partitions μ of length ℓ , and S_ℓ is the symmetric group of ℓ letters.

Our discovery of this paper is that the Laplace transform of the combinatorics, the cut-and-join equation in our case, explains the role of the Lambert curve, the ramification behavior of the projection $\pi : C \rightarrow \mathbb{C}^*$, the Cauchy differentiation kernel on C , and residue calculations that appear in the theory of topological recursion. As a consequence of this explanation, we obtain a proof of the Bouchard-Mariño conjecture [3]. For this purpose, it is essential to use a different parametrization of the Lambert curve:

$$x = e^{-(w+1)} \quad \text{and} \quad y = \frac{t-1}{t}.$$

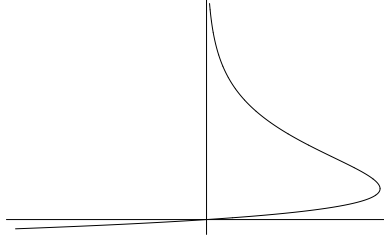


FIGURE 1.1. The Lambert curve $C \subset \mathbb{C}^* \times \mathbb{C}^*$ defined by $x = ye^{-y}$.

The coordinate w is the parameter of the Laplace transformation, which changes a function in positive integers to a complex analytic function in w . Recall the Stirling expansion

$$e^{-k} \frac{k^{k+n}}{k!} \sim \frac{1}{\sqrt{2\pi}} k^{n-\frac{1}{2}},$$

which makes its Laplace transform a function of \sqrt{w} . Note that the x -projection π of the Lambert curve (1.3) is locally a double-sheeted covering around its unique critical point ($x = e^{-1}, y = 1$). Therefore, the Laplace transform of the ELSV formula (1.1) naturally lives on the Lambert curve C rather than on the w -coordinate plane. Note that C is an analytic curve of genus 0 and t is its global coordinate. The point at infinity $t = \infty$ is the ramification point of the projection π . In terms of these coordinates, the Laplace transform of the ELSV formula becomes a *polynomial* in t -variables.

The proof of the Bouchard-Mariño conjecture is established as follows. A topological recursion of [13] is always given as a residue formula of symmetric differential forms on the spectral curve. The Laplace-transformed cut-and-join equation (1.2) is an equation among *primitives* of differential forms. We first take the exterior differential of this equation. We then analyze the role of the residue calculation in the theory of topological recursion [3, 13], and find that it is equivalent to evaluating the form at $q \in C$ and its conjugate point $\bar{q} \in C$ with respect to the local Galois covering $\pi : C \rightarrow \mathbb{C}$ near its critical point. This means all residue calculations are replaced by an algebraic operation of taking the direct image of the differential form via the projection π . We find that the direct image of (1.2) then becomes identical to the conjectured formula (1.5).

Theorem 1.3 (The Bouchard-Mariño Conjecture). *The linear Hodge integrals satisfy exactly the same topological recursion formula discovered in [13]:*

$$\begin{aligned}
(1.5) \quad & \sum_{n, n_L} \langle \tau_n \tau_{n_L} \Lambda_g^\vee(1) \rangle_{g, \ell+1} d\hat{\xi}_n(t) \otimes d\hat{\xi}_{n_L}(t_L) \\
& = \sum_{i=1}^{\ell} \sum_{m, n_L \setminus \{i\}} \langle \tau_m \tau_{n_L \setminus \{i\}} \Lambda_g^\vee(1) \rangle_{g, \ell} P_m(t, t_i) dt \otimes dt_i \otimes d\hat{\xi}_{n_L \setminus \{i\}}(t_{L \setminus \{i\}}) \\
& \quad + \left(\sum_{a, b, n_L} \langle \tau_a \tau_b \tau_{n_L} \Lambda_{g-1}^\vee(1) \rangle_{g-1, \ell+2} \right. \\
& \quad \left. + \sum_{\substack{\text{stable} \\ g_1+g_2=g \\ I \sqcup J=L}} \sum_{\substack{a, n_I \\ b, n_J}} \langle \tau_a \tau_{n_I} \Lambda_{g_1}^\vee(1) \rangle_{g_1, |I|+1} \langle \tau_b \tau_{n_J} \Lambda_{g_2}^\vee(1) \rangle_{g_2, |J|+1} \right) P_{a,b}(t) dt \otimes d\hat{\xi}_{n_L}(t_L),
\end{aligned}$$

where

$$d\hat{\xi}_{n_I}(t_I) = \bigotimes_{i \in I} \frac{d}{dt_i} \hat{\xi}_{n_i}(t_i) dt_i.$$

The functions $P_{a,b}(t)$ and $P_n(t, t_i)$ are defined by taking the polynomial part of the expressions

$$P_{a,b}(t) dt = \frac{1}{2} \left[\frac{ts(t)}{t-s(t)} \frac{dt}{t^2(t-1)} \left(\hat{\xi}_{a+1}(t) \hat{\xi}_{b+1}(s(t)) + \hat{\xi}_{a+1}(s(t)) \hat{\xi}_{b+1}(t) \right) \right]_+,$$

$$P_n(t, t_i) dt \otimes dt_i = dt_i \left[\frac{ts(t)}{t-s(t)} \left(\frac{\hat{\xi}_{n+1}(t) ds(t)}{s(t) - t_i} + \frac{\hat{\xi}_{n+1}(s(t)) dt}{t - t_i} \right) \right]_+,$$

where $s(t)$ is the deck-transformation of the projection $\pi : C \rightarrow \mathbb{C}^*$ around its critical point ∞ .

The relation between the cut-and-join formula, (1.2) and (1.5) is the following:

$$\begin{array}{ccccc} \text{Cut-and-Join} & \xrightarrow{\text{Laplace Transform}} & \text{Polynomial Equation} & \xrightarrow{\text{Direct Image}} & \text{Topological Recursion on} \\ \text{Equation} & & \text{on Primitives (1.2)} & & \text{Differential Forms (1.5)} \\ & & \downarrow & & \downarrow \\ \{\text{Partitions}\} & \longrightarrow & \text{Lambert Curve} & \xrightarrow{\text{Galois Cover}} & \mathbb{C} \end{array}$$

Mathematics of the topological recursion and its geometric realization includes still many more mysteries [2, 6, 13, 33]. Among them is a relation to integrable systems such as the Kadomtsev-Petviashvili equations [13]. In recent years these equations have played an essential role in the study of Hurwitz numbers [24, 25, 34, 40, 41, 42]. Since the aim of this paper is to give a proof of the Bouchard-Mariño conjecture and to give a geometric interpretation of the topological recursion for the Hurwitz case, we do not address this relation here. Since we relate the nature of the topological recursion and combinatorics by the Laplace transform, it is reasonable to ask: what is the *inverse* Laplace transform of the topological recursion in general? This question relates the Laplace transformation and the mirror symmetry. These are interesting topics to be further explored.

It is possible to prove the Bouchard-Mariño formula without appealing to the cut-and-join equation. Indeed, a matrix integral expression of the generating function of Hurwitz numbers has been recently discovered in [1], and its spectral curve is identified as the Lambert curve. As a consequence, the symplectic invariant theory of matrix models [9, 11] is directly applicable to Hurwitz theory. The discovery of [1] is that the derivatives of the symplectic invariants of the Lambert curve give $H_{g,\ell}(x_1, \dots, x_\ell)$ of (1.4). The topological recursion formula of Bouchard and Mariño then automatically follows. A deeper understanding of the interplay between these two totally different techniques is desirable.

Although our statement is simple and clear, technical details are quite involved. We have decided to provide all key details in this paper, believing that some of the analysis may be useful for further study of more general topological recursions. This explains the length of the current paper in the sections dealing with complex analysis and the Laplace transforms.

The paper is organized as follows. We start with identifying the generating function (1.4) as the Laplace transform of the ELSV formula (1.1) in Section 2. We then calculate the Laplace transform of the cut-and-join equation in Section 3 following [38], and present the key idea of the proof of Theorem 1.1. In Section 4 we give the statement of the Bouchard and Mariño conjecture [3]. We calculate the residues appearing in the topological recursion formula in Section 5 for the case of Hurwitz generating functions. The topological recursion

becomes the algebraic relation as presented in Theorem 1.3. In Section 6 we prove technical statements necessary for reducing (1.2) to (1.5) as a Galois average. The final Section 7 is devoted to proving the Bouchard-Mariño conjecture.

As an effective recursion, (1.2) and (1.5) calculate linear Hodge integrals, and hence Hurwitz numbers through the ELSV formula. A computation is performed by Michael Reinhard, an undergraduate student of UC Berkeley. We reproduce some of his tables at the end of the paper.

Acknowledgement. Our special thanks are due to Vincent Bouchard for numerous discussions and tireless explanations of the recursion formulas and the *Remodeling* theory. We thank the Institute for the Physics and Mathematics of the Universe, the Osaka City University Advanced Mathematical Institute, and the American Institute of Mathematics for their hospitality during our stay and for providing us with the opportunity of collaboration. Without their assistance, this collaboration would have never been started. We also thank Gaëtan Borot, Yon-Seo Kim, Chiu-Chu Melissa Liu, Kefeng Liu, Marcos Mariño, Nicolas Orantin, and Hao Xu for discussions, and Michael Reinhard for his permission to reproduce his computation of linear Hodge integrals and Hurwitz numbers in this paper. During the period of preparation of this work, B.E.'s research was supported in part by the ANR project Grandes Matrices Aléatoires ANR-08-BLAN-0311-01, the European Science Foundation through the Misgam program, and the Quebec government with the FQRNT; M.M. received financial support from the NSF, Kyoto University, Tôhoku University, KIAS in Seoul, and the University of Salamanca; and B.S. received support from IPMU.

2. THE LAPLACE TRANSFORM OF THE ELSV FORMULA

In this section we calculate the Laplace transform of the ELSV formula as a function in partitions μ . The result is a symmetric polynomial on the Lambert curve (1.3).

A *Hurwitz cover* is a smooth morphism $f : X \rightarrow \mathbb{P}^1$ of a connected nonsingular projective algebraic curve X of genus g to \mathbb{P}^1 that has only simple ramifications except for the point at infinity $\infty \in \mathbb{P}^1$. Let $f^{-1}(\infty) = \{p_1, \dots, p_\ell\}$. Then the induced morphism of the formal completion $\hat{f} : \hat{X}_{p_i} \rightarrow \hat{\mathbb{P}}_\infty^1$ is given by $z \mapsto z^{\mu_i}$ with a positive integer μ_i in terms of a formal parameter z around $p_i \in X$. We rearrange integers μ_i 's so that $\mu = (\mu_1 \geq \mu_2 \geq \dots \geq \mu_\ell > 0)$ is a partition of $\deg f = |\mu| = \mu_1 + \dots + \mu_\ell$ of length $\ell(\mu) = \ell$. We call f a Hurwitz cover of genus g and *profile* μ . A holomorphic automorphism of a Hurwitz cover is an automorphism ϕ of X that preserves f :

$$\begin{array}{ccc} X & \xrightarrow{\phi} & X \\ & \searrow f & \swarrow f \\ & \mathbb{P}^1 & . \end{array}$$

Two Hurwitz covers $f_1 : X_1 \rightarrow \mathbb{P}^1$ and $f_2 : X_2 \rightarrow \mathbb{P}^1$ are topologically equivalent if there is a homeomorphism $h : X_1 \rightarrow X_2$ such that

$$\begin{array}{ccc} X_1 & \xrightarrow{h} & X_2 \\ & \searrow f_1 & \swarrow f_2 \\ & \mathbb{P}^1 & . \end{array}$$

The *Hurwitz number* of type (g, μ) is defined by

$$h_{g,\mu} = \sum_{[f]} \frac{1}{|\text{Aut } f|},$$

where the sum is taken over all topologically equivalent classes of Hurwitz covers of a given genus g and profile μ . Although $h_{g,\mu}$ appears to be a rational number, it is indeed an integer for most of the cases because f has usually no non-trivial automorphisms. The celebrated ELSV formula [8, 21, 41] relates Hurwitz numbers and linear Hodge integrals on the Deligne-Mumford moduli stack $\overline{\mathcal{M}}_{g,\ell}$ consisting of stable algebraic curves of genus g with ℓ distinct nonsingular marked points. Denote by $\pi_{g,\ell} : \overline{\mathcal{M}}_{g,\ell+1} \rightarrow \overline{\mathcal{M}}_{g,\ell}$ the natural projection and by $\omega_{\pi_{g,\ell}}$ the relative dualizing sheaf of the universal curve $\pi_{g,\ell}$. The *Hodge bundle* \mathbb{E} on $\overline{\mathcal{M}}_{g,\ell}$ is defined by $\mathbb{E} = (\pi_{g,\ell})_* \omega_{\pi_{g,\ell}}$, and the λ -classes are the Chern classes of the Hodge bundle:

$$\lambda_i = c_i(\mathbb{E}) \in H^{2i}(\overline{\mathcal{M}}_{g,\ell}, \mathbb{Q}).$$

Let $\sigma_i : \overline{\mathcal{M}}_{g,\ell} \rightarrow \overline{\mathcal{M}}_{g,\ell+1}$ be the i -th tautological section of π , and put $\mathcal{L}_i = \sigma_i^*(\omega_{\pi_{g,\ell}})$. The ψ -classes are defined by

$$\psi_i = c_1(\mathcal{L}_i) \in H^2(\overline{\mathcal{M}}_{g,\ell}, \mathbb{Q}).$$

The ELSV formula then reads

$$h_{g,\mu} = \frac{r!}{|\text{Aut}(\mu)|} \prod_{i=1}^{\ell(\mu)} \frac{\mu_i^{\mu_i}}{\mu_i!} \int_{\overline{\mathcal{M}}_{g,\ell(\mu)}} \frac{\Lambda_g^\vee(1)}{\prod_{i=1}^{\ell(\mu)} (1 - \mu_i \psi_i)},$$

where $r = r(g, \mu) = 2g - 2 + \ell(\mu) + |\mu|$ is the number of simple ramification points of f .

The Deligne-Mumford stack $\overline{\mathcal{M}}_{g,\ell}$ is defined as the moduli space of *stable* curves satisfying the stability condition $2 - 2g - \ell < 0$. However, Hurwitz numbers are well defined for *unstable* geometries $(g, \ell) = (0, 1)$ and $(0, 2)$. It is an elementary exercise to show that

$$h_{0,k} = k^{k-3} \quad \text{and} \quad h_{0,(\mu_1, \mu_2)} = \frac{(\mu_1 + \mu_2)!}{\mu_1 + \mu_2} \cdot \frac{\mu_1^{\mu_1}}{\mu_1!} \cdot \frac{\mu_2^{\mu_2}}{\mu_2!}.$$

The ELSV formula remains true for unstable cases by *defining*

$$(2.1) \quad \int_{\overline{\mathcal{M}}_{0,1}} \frac{\Lambda_0^\vee(1)}{1 - k\psi} = \frac{1}{k^2},$$

$$(2.2) \quad \int_{\overline{\mathcal{M}}_{0,2}} \frac{\Lambda_0^\vee(1)}{(1 - \mu_1 \psi_1)(1 - \mu_2 \psi_2)} = \frac{1}{\mu_1 + \mu_2}.$$

Now fix an $\ell \geq 1$, and consider a partition μ of length ℓ as an ℓ -dimensional vector

$$\mu = (\mu_1, \dots, \mu_\ell) \in \mathbb{N}^\ell$$

consisting with positive integers. We define

$$(2.3) \quad \begin{aligned} H_g(\mu) &= \frac{|\text{Aut}(\mu)|}{r(g, \mu)!} \cdot h_{g,\mu} \\ &= \prod_{i=1}^{\ell} \frac{\mu_i^{\mu_i}}{\mu_i!} \int_{\overline{\mathcal{M}}_{g,\ell}} \frac{\Lambda_g^\vee(1)}{\prod_{i=1}^{\ell} (1 - \mu_i \psi_i)} = \sum_{n_1 + \dots + n_\ell \leq 3g - 3 + \ell} \langle \tau_{n_1} \cdots \tau_{n_\ell} \Lambda_g^\vee(1) \rangle \prod_{i=1}^{\ell} \frac{\mu_i^{\mu_i + n_i}}{\mu_i!} \end{aligned}$$

as a function in μ . It's Laplace transform

$$(2.4) \quad \mathcal{H}_{g,\ell}(w_1, \dots, w_\ell) = \sum_{\mu \in \mathbb{N}^\ell} H_g(\mu) e^{-(\mu_1(w_1+1) + \dots + \mu_\ell(w_\ell+1))}$$

is the function we consider in this paper. We note that the automorphism group $\text{Aut}(\mu)$ acts trivially on the function $e^{-(\mu_1(w_1+1)+\dots+\mu_\ell(w_\ell+1))}$, which explains its appearance in (2.3). Since the coordinate change $x = e^{-(w+1)}$ identifies

$$(2.5) \quad \frac{\partial^\ell}{\partial x_1 \cdots \partial x_\ell} \mathcal{H}_{g,\ell}(w(x_1), \dots, w(x_\ell)) = H_{g,\ell}(x_1, \dots, x_\ell),$$

the Laplace transform (2.4) is a *primitive* of the generating function (1.4).

Before performing the exact calculation of the holomorphic function $\mathcal{H}_{g,\ell}(w_1, \dots, w_\ell)$, let us make a quick estimate here. From Stirling's formula

$$e^{-k} \frac{k^{k+n}}{k!} \sim \frac{1}{\sqrt{2\pi}} k^{n-\frac{1}{2}},$$

it is obvious that $\mathcal{H}_{g,\ell}(w_1, \dots, w_\ell)$ is holomorphic on $\text{Re}(w_i) > 0$ for all $i = 1, \dots, \ell$. Because of the half-integer powers of μ_i 's, the Laplace transform $\mathcal{H}_{g,\ell}(w_1, \dots, w_\ell)$ is expected to be a meromorphic function on a double-sheeted covering of the w_i -planes. Such a double covering is provided by the Lambert curve C of (1.3). So we define

$$(2.6) \quad t = 1 + \sum_{k=1}^{\infty} \frac{k^k}{k!} e^{-k(w+1)},$$

which gives a global coordinate of C . The summation converges for $\text{Re}(w) > 0$, and the Lambert curve is expressed in terms of w and t coordinates as

$$(2.7) \quad e^{-(w+1)} = \left(1 - \frac{1}{t}\right) e^{-(1-\frac{1}{t})}.$$

The w -projection $\pi : C \rightarrow \mathbb{C}$ is locally a double-sheeted covering at $t = \infty$. The inverse function of (2.6) is given by

$$(2.8) \quad w = w(t) = -\frac{1}{t} - \log\left(1 - \frac{1}{t}\right) = \sum_{m=2}^{\infty} \frac{1}{m} \frac{1}{t^m},$$

which is holomorphic on $\text{Re}(t) > 1$. When considered as a functional equation, (2.8) has exactly two solutions: t and

$$(2.9) \quad s(t) = -t + \frac{2}{3} + \frac{4}{135}t^{-2} + \frac{8}{405}t^{-3} + \frac{8}{567}t^{-4} + \dots.$$

This is the deck-transformation of the projection $\pi : C \rightarrow \mathbb{C}$ near $t = \infty$ and satisfies the involution equation $s(s(t)) = t$. It is analytic on $\mathbb{C} \setminus [0, 1]$ and has logarithmic singularities at 0 and 1. Although $w(t) = w(s(t))$, $s(t)$ is not given by the Laplace transform (2.6).

Since the Laplace transform

$$(2.10) \quad \hat{\xi}_n(t) = \sum_{k=1}^{\infty} \frac{k^{k+n}}{k!} e^{-k(w+1)}$$

also naturally lives on C , it is a meromorphic function in t rather than in w . Actually it is a *polynomial* of degree $2n + 1$ for $n \geq 0$ because of the recursion formula

$$(2.11) \quad \hat{\xi}_{n+1}(t) = t^2(t-1) \frac{d}{dt} \hat{\xi}_n(t) \quad \text{for all } n \geq 0,$$

which follows from (2.6), (2.10), and (2.8) that implies

$$(2.12) \quad -dw = \frac{dt}{t^2(t-1)}.$$

We note that the differential operator of (2.11) is discovered in [19]. For future convenience, we define

$$(2.13) \quad \hat{\xi}_{-1}(t) = \frac{t-1}{t} = y,$$

which is indeed the y coordinate of the original Lambert curve (1.3). We now see that the Laplace transform

$$(2.14) \quad \begin{aligned} \widehat{\mathcal{H}}_{g,\ell}(t_1, \dots, t_\ell) &= \mathcal{H}_{g,\ell}((w(t_1), \dots, w(t_\ell))) = \sum_{\mu \in \mathbb{N}^\ell} H_g(\mu) e^{-(\mu_1(w_1+1) + \dots + \mu_\ell(w_\ell+1))} \\ &= \sum_{n_1 + \dots + n_\ell \leq 3g-3+\ell} \langle \tau_{n_1} \cdots \tau_{n_\ell} \Lambda_g^\vee(1) \rangle \prod_{i=1}^{\ell} \hat{\xi}_{n_i}(t_i) \end{aligned}$$

is a symmetric *polynomial* in the t -variables when $2g - 2 + \ell > 0$.

It has been noted in [1, 10, 11, 13, 14] that the *Airy curve* $w = \frac{1}{2}v^2$ is a universal object of the topological recursion for the case of a genus 0 spectral curve with only one critical point. Analysis of the Airy curve provides a good control of the topological recursion formula for such cases. The Airy curve expression is also valid around any non-degenerate critical point of a general spectral curve. To switch to the local Airy curve coordinate, we define

$$(2.15) \quad v = v(t) = t^{-1} + \frac{1}{3}t^{-2} + \frac{7}{36}t^{-3} + \frac{73}{540}t^{-4} + \frac{1331}{12960}t^{-5} + \dots$$

as a function in t that solves

$$(2.16) \quad \frac{1}{2}v^2 = w = -\frac{1}{t} - \log\left(1 - \frac{1}{t}\right) = -\frac{1}{s(t)} - \log\left(1 - \frac{1}{s(t)}\right) = \sum_{m=2}^{\infty} \frac{1}{m} \frac{1}{t^m}.$$

Note that we are making a choice of the branch of the square root of w that is consistent with (2.6). The involution (2.9) becomes simply

$$(2.17) \quad v(t) = -v(s(t)).$$

The new coordinate v plays a key role later when we reduce the Laplace transform of the cut-and-join equation (1.2) to the Bouchard-Mariño topological recursion (1.5).

3. THE CUT-AND-JOIN EQUATION AND ITS LAPLACE TRANSFORM

In the modern times the cut-and-join equation for Hurwitz numbers was discovered in [17, 43], though it seems to be known to Hurwitz [23]. It has become an effective tool for studying algebraic geometry of Hurwitz numbers and many related subjects [4, 18, 19, 20, 25, 26, 28, 30, 41, 45]. In this section we calculate the Laplace transform of the cut-and-join equation following [38].

The simplest way of presenting the cut-and-join equation is to use a different *primitive* of the same generating function of Hurwitz numbers (1.4). Let

$$(3.1) \quad \mathbf{H}(s, \mathbf{p}) = \sum_{g \geq 0} \sum_{\ell \geq 1} \mathbf{H}_{g,\ell}(s, \mathbf{p}); \quad \mathbf{H}_{g,\ell}(s, \mathbf{p}) = \sum_{\mu: \ell(\mu) = \ell} h_{g,\mu} \mathbf{p}_\mu \frac{s^r}{r!},$$

where $\mathbf{p}_\mu = p_{\mu_1} p_{\mu_2} \cdots p_{\mu_\ell}$, and $r = 2g - 2 + \ell + |\mu|$ is the number of simple ramification points on \mathbb{P}^1 . The summation is over all partitions of length ℓ . Here p_k is the power-sum symmetric function

$$(3.2) \quad p_k = \sum_{i \geq 1} x_i^k,$$

which is related to the monomial symmetric functions by

$$\frac{\partial^\ell}{\partial x_1 \cdots \partial x_\ell} \mathbf{p}^\mu = \sum_{\sigma \in S_\ell} \prod_{i=1}^{\ell} \mu_i x_{\sigma(i)}^{\mu_i - 1}.$$

Therefore, we have

$$\frac{\partial^\ell}{\partial x_1 \cdots \partial x_\ell} \mathbf{H}_{g,\ell}(1, \mathbf{p}) = H_{g,\ell}(x_1, \dots, x_\ell) = \sum_{\mu: \ell(\mu) = \ell} \frac{\mu_1 \mu_2 \cdots \mu_\ell}{(2g - 2 + \ell + |\mu|)!} h_{g,\mu} \sum_{\sigma \in S_\ell} \prod_{i=1}^{\ell} x_{\sigma(i)}^{\mu_i - 1},$$

which is the generating function of (1.4). Because of the identification (2.5), the primitives $\mathbf{H}_{g,\ell}(1, \mathbf{p})$ and $\hat{\mathcal{H}}_{g,\ell}(t_1, \dots, t_\ell)$ of (2.14) are essentially the same function, different only by a constant.

Remark 3.1. Although we do not use the fact here, we note that $\mathbf{H}(s, \mathbf{p})$ is a one-parameter family of τ -functions of the KP equations with $\frac{1}{k} p_k$ as the KP time variables [25, 40]. The parameter s is the deformation parameter.

Let $z \in \mathbb{P}^1$ be a point at which the covering $f : X \rightarrow \mathbb{P}^1$ is simply ramified. Locally we can name sheets, so we assume sheets a and b are ramified over z . When we merge z to ∞ , one of the two things happen:

- (1) The *cut case*. If both sheets are ramified at the same point x_i of the inverse image $f^{-1}(\infty) = \{x_1, \dots, x_\ell\}$, then the resulting ramification after merging z to ∞ has a profile

$$(\mu_1, \dots, \widehat{\mu}_i, \dots, \mu_\ell, \alpha, \mu_i - \alpha) = (\mu(\hat{i}), \alpha, \mu_i - \alpha)$$

for $1 \leq \alpha < \mu_i$.

- (2) Otherwise we are in the *join case*. If sheets a and b are ramified at two distinct points, say x_i and x_j above ∞ , then the result of merging creates a new profile

$$(\mu_1, \dots, \widehat{\mu}_i, \dots, \widehat{\mu}_j, \dots, \mu_\ell, \mu_i + \mu_j) = (\mu(\hat{i}, \hat{j}), \mu_i + \mu_j).$$

Here the $\widehat{}$ sign means removing the entry. The above consideration tells us what happens to the generating function of the Hurwitz numbers when we differentiate it by s , because it decreases the degree in s , or the number of simple ramification points, by 1. Since the cut case may cause a disconnected covering, let us use the generating function of Hurwitz numbers allowing disconnected curves to cover \mathbb{P}^1 . Then the cut-and-join equation takes the following simple form:

$$\left[\frac{\partial}{\partial s} - \frac{1}{2} \sum_{\alpha, \beta \geq 1} \left((\alpha + \beta) p_\alpha p_\beta \frac{\partial}{\partial p_{\alpha+\beta}} + \alpha \beta p_{\alpha+\beta} \frac{\partial^2}{\partial p_\alpha \partial p_\beta} \right) \right] e^{\mathbf{H}(s, \mathbf{p})} = 0.$$

It immediately implies

$$(3.3) \quad \frac{\partial \mathbf{H}}{\partial s} = \frac{1}{2} \sum_{\alpha, \beta \geq 1} \left((\alpha + \beta) p_\alpha p_\beta \frac{\partial \mathbf{H}}{\partial p_{\alpha+\beta}} + \alpha \beta p_{\alpha+\beta} \frac{\partial^2 \mathbf{H}}{\partial p_\alpha \partial p_\beta} + \alpha \beta p_{\alpha+\beta} \frac{\partial \mathbf{H}}{\partial p_\alpha} \cdot \frac{\partial \mathbf{H}}{\partial p_\beta} \right),$$

which is the cut-and-join equation for the generating function $\mathbf{H}(s, \mathbf{p})$ of the number of *connected* Hurwitz coverings.

Let us now apply the ELSV formula (1.1) to (3.1). We obtain

$$(3.4) \quad \mathbf{H}_{g,\ell}(s, \mathbf{p}) = \frac{1}{\ell!} \sum_{n_L \in \mathbb{N}^\ell} \langle \tau_{n_L} \Lambda_g^\vee(1) \rangle_{g,\ell} s^{2g-2+\ell} \prod_{i=1}^{\ell} \sum_{\mu_i=1}^{\infty} \frac{\mu_i^{\mu_i+n_i}}{\mu_i!} s^{\mu_i} p_{\mu_i}$$

$$= \frac{1}{\ell!} \sum_{(\mu_1, \dots, \mu_\ell) \in \mathbb{N}^\ell} H_g(\mu) \mathbf{p}_\mu s^r = \sum_{\mu: \ell(\mu) = \ell} \frac{1}{|\text{Aut}(\mu)|} H_g(\mu) \mathbf{p}_\mu s^r,$$

where $H_g(\mu)$ is introduced in (2.3). Now for every choice of $r \geq 1$ and a partition μ , the coefficient of $\mathbf{p}_\mu s^{r-1}$ of the cut-and-join equation (3.3) gives

Theorem 3.2 ([38]). *The functions $H_g(\mu)$ of (2.3) satisfy a recursion equation*

$$(3.5) \quad r(g, \mu) H_g(\mu) = \sum_{i < j} (\mu_i + \mu_j) H_g(\mu(\hat{i}, \hat{j}), \mu_i + \mu_j) \\ + \frac{1}{2} \sum_{i=1}^{\ell} \sum_{\alpha + \beta = \mu_i} \alpha \beta \left(H_{g-1}(\mu(\hat{i}), \alpha, \beta) + \sum_{\substack{g_1 + g_2 = g \\ \nu_1 \sqcup \nu_2 = \mu(\hat{i})}} H_{g_1}(\nu_1, \alpha) H_{g_2}(\nu_2, \beta) \right).$$

Remark 3.3. Note that

$$\ell(\mu(\hat{i}, \hat{j})) = \ell - 2 \\ \ell(\nu_1) + \ell(\nu_2) = \ell(\mu(\hat{i})) = \ell - 1.$$

Thus the complexity $2g - 2 + \ell$ is one less for the coverings appearing in the RHS of (3.5), which is the effect of $\partial/\partial s$ applied to $\mathbf{H}(s, \mathbf{p})$, *except* for the unstable geometry corresponding to $g_i = 0$ and $|\nu_i| = 0$ in the join terms. If we move the $(0, 1)$ -terms to the LHS, then the cut-and-join equation (3.5) becomes a topological recursion formula.

Let us first calculate the Laplace transform of the cut-and-join equation for the $\ell = 1$ case to see what is involved. We then move on to the more general case later, following [38].

Proposition 3.4. *The Laplace transform of the cut-and-join equation for the $\ell = 1$ case gives the following equation:*

$$(3.6) \quad \sum_{n \leq 3g-2} \langle \tau_n \Lambda_g^\vee(1) \rangle_{g,1} \left[(2g-1) \hat{\xi}_n(t) + \hat{\xi}_{n+1}(t) (1 - \hat{\xi}_{-1}(t)) \right] \\ = \frac{1}{2} \sum_{a+b \leq 3g-4} \left[\langle \tau_a \tau_b \Lambda_{g-1}^\vee(1) \rangle_{g-1,2} + \sum_{g_1+g_2=g}^{\text{stable}} \langle \tau_a \Lambda_{g_1}^\vee(1) \rangle_{g_1,1} \langle \tau_b \Lambda_{g_2}^\vee(1) \rangle_{g_2,1} \right] \hat{\xi}_{a+1}(t) \hat{\xi}_{b+1}(t).$$

Proof. The cut-and-join equation for $\ell = 1$ is a simple equation

$$(3.7) \quad (2g-1+\mu) H_g(\mu) = \frac{1}{2} \sum_{\alpha+\beta=\mu} \alpha \beta \left(H_{g-1}(\alpha, \beta) + \sum_{g_1+g_2=g} H_{g_1}(\alpha) H_{g_2}(\beta) \right).$$

The Laplace transform of the LHS of (3.7) is

$$\sum_{n \leq 3g-2} \langle \tau_n \Lambda_g^\vee(1) \rangle_{g,1} \left[(2g-1) \hat{\xi}_n(t) + \hat{\xi}_{n+1}(t) \right].$$

When summing over μ to compute the Laplace transform of the RHS, we switch to sum over α and β independently. The factor $\frac{1}{2}$ cancels the double count on the diagonal. Thus the Laplace transform of the *stable* geometries of the RHS is

$$\frac{1}{2} \sum_{a+b \leq 3g-4} \left[\langle \tau_a \tau_b \Lambda_{g-1}^\vee(1) \rangle_{g-1,2} + \sum_{g_1+g_2=g}^{\text{stable}} \langle \tau_a \Lambda_{g_1}^\vee(1) \rangle_{g_1,1} \langle \tau_b \Lambda_{g_2}^\vee(1) \rangle_{g_2,1} \right] \hat{\xi}_{a+1}(t) \hat{\xi}_{b+1}(t).$$

The *unstable* terms contained in the second summand of the RHS of (3.7) are the $g = 0$ terms $H_0(\alpha)H_g(\beta) + H_g(\alpha)H_0(\beta)$. We calculate the Laplace transform of these unstable terms using (2.1). Since

$$H_0(\alpha) = \frac{\alpha^{\alpha-2}}{\alpha!},$$

the result is

$$\sum_a \langle \tau_a \Lambda_g^\vee(1) \rangle_{g,1} \hat{\xi}_{-1}(t) \hat{\xi}_{a+1}(t).$$

This completes the proof. \square

Remark 3.5. We note that (3.6) is a polynomial equation of degree $2n + 2$. Since $\hat{\xi}_{-1}(t) = 1 - \frac{1}{t}$, the leading term of $\hat{\xi}_{n+1}(t)$ is canceled in the formula.

To calculate the Laplace transform of the general case (3.5), we need to deal with both of the unstable geometries $(g, \ell) = (0, 1)$ and $(0, 2)$. These are the exceptions for the general formula (2.14). Recall the $(0, 1)$ case (2.1). The formula

$$(3.8) \quad \widehat{\mathcal{H}}_{0,1}(t) = \sum_{k=1}^{\infty} \frac{k^{k-2}}{k!} e^{-k(w+1)} = -\frac{1}{2t^2} + c = \hat{\xi}_{-2}(t),$$

where the constant c is given by

$$c = \sum_{k=1}^{\infty} \frac{k^{k-2}}{k!} e^{-k},$$

is used in (3.6). The $(g, \ell) = (0, 2)$ terms require a more careful computation. We shall see that these are the terms that exactly correspond to the terms involving the Cauchy differentiation kernel in the Bouchard-Mariño recursion.

Proposition 3.6. *We have the following Laplace transformation formula:*

$$(3.9) \quad \widehat{\mathcal{H}}_{0,2}(t_1, t_2) = \sum_{\mu_1, \mu_2 \geq 1} \frac{1}{\mu_1 + \mu_2} \cdot \frac{\mu_1^{\mu_1}}{\mu_1!} \cdot \frac{\mu_2^{\mu_2}}{\mu_2!} e^{-\mu_1(w_1+1)} e^{-\mu_2(w_2+1)} \\ = \log \left(\frac{\hat{\xi}_{-1}(t_1) - \hat{\xi}_{-1}(t_2)}{x_1 - x_2} \right) - \hat{\xi}_{-1}(t_1) - \hat{\xi}_{-1}(t_2).$$

Proof. Since $x = e^{-(w+1)}$, (3.9) is equivalent to

$$(3.10) \quad \sum_{\substack{\mu_1, \mu_2 \geq 0 \\ (\mu_1, \mu_2) \neq (0,0)}} \frac{1}{\mu_1 + \mu_2} \cdot \frac{\mu_1^{\mu_1}}{\mu_1!} \cdot \frac{\mu_2^{\mu_2}}{\mu_2!} x_1^{\mu_1} x_2^{\mu_2} = \log \left(\sum_{k=1}^{\infty} \frac{k^{k-1}}{k!} \cdot \frac{x_1^k - x_2^k}{x_1 - x_2} \right),$$

where $|x_1| < e^{-1}$, $|x_2| < e^{-1}$, and $0 < |x_1 - x_2| < e^{-1}$ so that the formula is an equation of holomorphic functions in x_1 and x_2 . Define

$$\phi(x_1, x_2) \stackrel{\text{def}}{=} \sum_{\substack{\mu_1, \mu_2 \geq 0 \\ (\mu_1, \mu_2) \neq (0,0)}} \frac{1}{\mu_1 + \mu_2} \cdot \frac{\mu_1^{\mu_1}}{\mu_1!} \cdot \frac{\mu_2^{\mu_2}}{\mu_2!} x_1^{\mu_1} x_2^{\mu_2} - \log \left(\sum_{k=1}^{\infty} \frac{k^{k-1}}{k!} \cdot \frac{x_1^k - x_2^k}{x_1 - x_2} \right).$$

Then

$$\phi(x, 0) = \sum_{\mu_1 \geq 1} \frac{\mu_1^{\mu_1-1}}{\mu_1!} x^{\mu_1} - \log \left(\sum_{k=1}^{\infty} \frac{k^{k-1}}{k!} \cdot x^{k-1} \right)$$

$$\begin{aligned}
&= \hat{\xi}_{-1}(t) - \log\left(\frac{\hat{\xi}_{-1}(t)}{x}\right) = 1 - \frac{1}{t} - \log\left(1 - \frac{1}{t}\right) + \log x \\
&= 1 - \frac{1}{t} - \log\left(1 - \frac{1}{t}\right) - w - 1 = 0
\end{aligned}$$

due to (2.8). Here t is restricted on the domain $Re(t) > 1$. Since

$$\begin{aligned}
&x_1 \frac{\partial}{\partial x_1} \log\left(\sum_{k=1}^{\infty} \frac{k^{k-1}}{k!} \cdot \frac{x_1^k - x_2^k}{x_1 - x_2}\right) \\
&= t_1^2(t_1 - 1) \frac{\partial}{\partial t_1} \log\left(\hat{\xi}_{-1}(t_1) - \hat{\xi}_{-1}(t_2)\right) - x_1 \frac{\partial}{\partial x_1} \log(x_1 - x_2) \\
&= t_1^2(t_1 - 1) \frac{\partial}{\partial t_1} \log\left(-\frac{1}{t_1} + \frac{1}{t_2}\right) - \frac{x_1}{x_1 - x_2} \\
&= \frac{t_1 t_2 (t_1 - 1)}{t_1 - t_2} - \frac{x_1}{x_1 - x_2},
\end{aligned}$$

we have

$$\begin{aligned}
&\left(x_1 \frac{\partial}{\partial x_1} + x_2 \frac{\partial}{\partial x_2}\right) \log\left(\sum_{k=1}^{\infty} \frac{k^{k-1}}{k!} \cdot \frac{x_1^k - x_2^k}{x_1 - x_2}\right) \\
&= \frac{t_1 t_2 (t_1 - 1) - t_1 t_2 (t_2 - 1)}{t_1 - t_2} - \frac{x_1 - x_2}{x_1 - x_2} \\
&= t_1 t_2 - 1 = \hat{\xi}_0(t_1) \hat{\xi}_0(t_2) + \hat{\xi}_0(t_1) + \hat{\xi}_0(t_2).
\end{aligned}$$

On the other hand, we also have

$$\begin{aligned}
&\left(x_1 \frac{\partial}{\partial x_1} + x_2 \frac{\partial}{\partial x_2}\right) \sum_{\substack{\mu_1, \mu_2 \geq 0 \\ (\mu_1, \mu_2) \neq (0,0)}} \frac{1}{\mu_1 + \mu_2} \cdot \frac{\mu_1^{\mu_1}}{\mu_1!} \cdot \frac{\mu_2^{\mu_2}}{\mu_2!} x_1^{\mu_1} x_2^{\mu_2} \\
&= \hat{\xi}_0(t_1) \hat{\xi}_0(t_2) + \hat{\xi}_0(t_1) + \hat{\xi}_0(t_2).
\end{aligned}$$

Therefore,

$$(3.11) \quad \left(x_1 \frac{\partial}{\partial x_1} + x_2 \frac{\partial}{\partial x_2}\right) \phi(x_1, x_2) = 0.$$

Note that $\phi(x_1, x_2)$ is a holomorphic function in x_1 and x_2 . Therefore, it has a series expansion in homogeneous polynomials around $(0, 0)$. Since a homogeneous polynomial in x_1 and x_2 of degree n is an eigenvector of the differential operator $x_1 \frac{\partial}{\partial x_1} + x_2 \frac{\partial}{\partial x_2}$ belonging to the eigenvalue n , the only holomorphic solution to the Euler differential equation (3.11) is a constant. But since $\phi(x_1, 0) = 0$, we conclude that $\phi(x_1, x_2) = 0$. This completes the proof of (3.10), and hence the proposition. \square

The following polynomial recursion formula was established in [38]. Since each of the polynomials $\hat{\mathcal{H}}_{g,\ell}(t_L)$'s in (3.12) satisfies the stability condition $2g - 2 + \ell > 0$, it is equivalent to (1.2) after expanding the generating functions using (2.14).

Theorem 3.7 ([38]). *The Laplace transform of the cut-and-join equation (3.5) produces the following polynomial equation on the Lambert curve:*

$$\begin{aligned}
(3.12) \quad & \left(2g - 2 + \ell + \sum_{i=1}^{\ell} (1 - \hat{\xi}_{-1}(t_i)) t_i^2 (t_i - 1) \frac{\partial}{\partial t_i} \right) \widehat{\mathcal{H}}_{g,\ell}(t_1, \dots, t_\ell) \\
&= \sum_{i < j} t_i t_j \frac{t_i^2 (t_i - 1)^2 \frac{\partial}{\partial t_i} \widehat{\mathcal{H}}_{g,\ell-1}(t_1, \dots, \hat{t}_j, \dots, t_\ell) - t_j^2 (t_j - 1)^2 \frac{\partial}{\partial t_j} \widehat{\mathcal{H}}_{g,\ell-1}(t_1, \dots, \hat{t}_i, \dots, t_\ell)}{t_i - t_j} \\
&\quad - \sum_{i \neq j} t_i^3 (t_i - 1) \frac{\partial}{\partial t_i} \widehat{\mathcal{H}}_{g,\ell-1}(t_1, \dots, \hat{t}_j, \dots, t_\ell) \\
&\quad + \frac{1}{2} \sum_{i=1}^{\ell} \left[u_1^2 (u_1 - 1) u_2^2 (u_2 - 1) \frac{\partial^2}{\partial u_1 \partial u_2} \widehat{\mathcal{H}}_{g-1,\ell+1}(u_1, u_2, t_{L \setminus \{i\}}) \right]_{u_1=u_2=t_i} \\
&\quad + \frac{1}{2} \sum_{i=1}^{\ell} \sum_{\substack{\text{stable} \\ g_1+g_2=g \\ J \sqcup K = L \setminus \{i\}}} t_i^2 (t_i - 1) \frac{\partial}{\partial t_i} \widehat{\mathcal{H}}_{g_1,|J|+1}(t_i, t_J) \cdot t_i^2 (t_i - 1) \frac{\partial}{\partial t_i} \widehat{\mathcal{H}}_{g_2,|K|+1}(t_i, t_K).
\end{aligned}$$

In the last sum each term is restricted to satisfy the stability conditions $2g_1 - 1 + |J| > 0$ and $2g_2 - 1 + |K| > 0$.

Remark 3.8. The polynomial equation (3.12) is equivalent to the original cut-and-join equation (3.5). Note that the topological recursion structure of (3.12) is exactly the same as (1.5). Although (3.12) contains more terms, all functions involved are polynomials that are easy to calculate from (2.11), whereas (1.5) requires computation of the involution $s(t)$ of (2.9) and infinite series expansions.

Remark 3.9. It is an easy task to deduce the Witten-Kontsevich theorem, i.e., the Virasoro constraint condition for the ψ -class intersection numbers [44, 27], from (3.12). Let us use the normalized notation $\sigma_n = (2n+1)!!\tau_n$ for the ψ -class intersections. Then the formula according to Dijkgraaf, Verlinde and Verlinde [7] is

$$\begin{aligned}
(3.13) \quad \langle \sigma_n \sigma_{n_L} \rangle_{g,\ell+1} &= \frac{1}{2} \sum_{a+b=n-2} \langle \sigma_a \sigma_b \sigma_{n_L} \rangle_{g-1,\ell+2} + \sum_{i \in L} (2n_i + 1) \langle \sigma_{n+n_i-1} \sigma_{n_L \setminus \{i\}} \rangle_{g,\ell} \\
&\quad + \frac{1}{2} \sum_{\substack{\text{stable} \\ g_1+g_2=g \\ I \sqcup J = L}} \sum_{a+b=n-2} \langle \sigma_a \sigma_{n_I} \rangle_{g_1,|I|+1} \cdot \langle \sigma_b \sigma_{n_J} \rangle_{g_2,|J|+1}.
\end{aligned}$$

Eqn.(3.13) is exactly the relation of the homogeneous top degree terms of (3.12), after canceling the highest degree terms coming from $\hat{\xi}_{n_i+1}(t_i)$ in the LHS [38]. This derivation is in the same spirit as those found in [4, 26, 41], though the argument is much clearer due to the polynomial nature of our equation.

4. THE BOUCHARD-MARIÑO RECURSION FORMULA FOR HURWITZ NUMBERS

In this section we present the precise statement of the Bouchard-Mariño conjecture on Hurwitz numbers.

Recall the function we introduced in (2.6):

$$(4.1) \quad t = t(x) = 1 + \sum_{k=1}^{\infty} \frac{k^k}{k!} x^k$$

This is closely related to the *Lambert W-function*

$$(4.2) \quad W(x) = - \sum_{k=1}^{\infty} \frac{k^{k-1}}{k!} (-x)^k.$$

By abuse of terminology, we also call the function $t(x)$ of (4.1) the Lambert function. The power series (4.1) has the radius of convergence $1/e$, and its inverse function is given by

$$(4.3) \quad x = x(t) = \frac{1}{e} \left(1 - \frac{1}{t} \right) e^{\frac{1}{t}}.$$

Motivated by the Lambert W -function, a plane analytic curve

$$(4.4) \quad C = \{(x, t) \mid x = x(t)\} \subset \mathbb{C}^* \times \mathbb{C}^*$$

is introduced in [3], which is exactly the Lambert curve (1.3). We denote by $\pi : C \rightarrow \mathbb{C}$ the x -projection. Bouchard-Mariño [3] then defines a tower of polynomial differentials on the Lambert curve C by

$$(4.5) \quad \xi_n(t) = \frac{d}{dt} \left[t^2(t-1) \xi_{n-1}(t) \right]$$

with the initial condition

$$(4.6) \quad \xi_0(t) = dt.$$

It is obvious from (4.5) and (4.6) that for $n \geq 0$, $\xi_n(t)$ is a polynomial 1-form of degree $2n$ with a general expression

$$\xi_n(t) = t^n \left[(2n+1)!! t^n - \left(\frac{(2n+3)!!}{3} - (2n+1)!! \right) t^{n-1} + \cdots + (-1)^n (n+1)! \right] dt.$$

All the coefficients of $\xi_n(t)$ have a combinatorial meaning called the *second order reciprocal Stirling numbers*. As we will note below, the leading coefficient is responsible for the Witten-Kontsevich theorem on the cotangent class intersections, and the lowest coefficient is related to the λ_g -formula [38]. For a convenience, we also use $\xi_{-1}(t) = t^{-2} dt$ and $\xi_{-2}(t) = t^{-3} dt$.

Remark 4.1. The polynomial $\hat{\xi}_n(t)$ of (2.10) is a primitive of $\xi_n(t)$:

$$(4.7) \quad d\hat{\xi}_n(t) = \xi_n(t).$$

Definition 4.2. Let us call the symmetric polynomial differential form

$$d^{\otimes \ell} \hat{\mathcal{H}}_{g,\ell}(t_1, \dots, t_\ell) = \sum_{n_1 + \cdots + n_\ell \leq 3g-3+\ell} \langle \tau_{n_1} \cdots \tau_{n_\ell} \Lambda_g^\vee(1) \rangle \bigotimes_{i=1}^{\ell} \xi_{n_i}(t_i)$$

on C^ℓ the *Hurwitz differential* of type (g, ℓ) .

Remark 4.3. Our $\xi_n(t)$ is exactly the same as the $\zeta_n(y)$ -differential of [3]. However, this mere coordinate change happens to be essential. Indeed, the fact that our expression is a *polynomial* in t -variables allows us to calculate the residues in the Bouchard-Mariño formula in Section 5.

Remark 4.4. The degree of $d^{\otimes \ell} \hat{\mathcal{H}}_{g,\ell}(t_1, \dots, t_\ell)$ is $2(3g-3+\ell)$, and the homogeneous top degree terms give a generating function of the ψ -class intersection numbers

$$\sum_{n_1 + \cdots + n_\ell = 3g-3+\ell} \langle \tau_{n_1} \cdots \tau_{n_\ell} \rangle \prod_{i=1}^{\ell} (2n_i + 1)!! t_i^{2n_i} \bigotimes_{i=1}^{\ell} dt_i.$$

The homogeneous lowest degree terms of $d^{\otimes \ell} \widehat{\mathcal{H}}_{g,\ell}(t_1, \dots, t_\ell)$ are

$$(-1)^{3g-3+\ell} \sum_{n_1+\dots+n_\ell=2g-3+\ell} \langle \tau_{n_1} \cdots \tau_{n_\ell} \lambda_g \rangle \prod_{i=1}^{\ell} (n_i+1)! t_i^{n_i} \bigotimes_{i=1}^{\ell} dt_i.$$

The combinatorial coefficients of the λ_g -formula [15, 16] can be directly deduced from the topological recursion formula (1.2) [38], explaining the mechanism found in [20].

Remark 4.5. The unstable Hurwitz differentials follow from (2.1) and (3.9). They are

$$(4.8) \quad d\widehat{\mathcal{H}}_{0,1}(t) = \frac{1}{t^3} dt = \xi_{-2}(t);$$

$$(4.9) \quad d^{\otimes 2} \widehat{\mathcal{H}}_{0,2}(t_1, t_2) = \frac{dt_1 \otimes dt_2}{(t_1 - t_2)^2} - \pi^* \frac{dx_1 \otimes dx_2}{(x_1 - x_2)^2}.$$

Remark 4.6. The simplest stable Hurwitz differentials are given by

$$(4.10) \quad \begin{aligned} d^{\otimes 3} \widehat{\mathcal{H}}_{0,3}(t_1, t_2, t_3) &= dt_1 \otimes dt_2 \otimes dt_3; \\ d\widehat{\mathcal{H}}_{1,1}(t) &= \frac{1}{24} (-\xi_0(t) + \xi_1(t)) = \frac{1}{24} (t-1)(3t+1) dt. \end{aligned}$$

The amazing insight of Bouchard and Mariño [3] is that the Hurwitz differentials of Definition 4.2 should satisfy the topological recursion relation of Eynard and Orantin [13] based on the analytic curve C of (4.4) as the spectral curve. Since the topological recursion utilizes the critical behavior of the x -projection $\pi : C \rightarrow \mathbb{C}^*$, let us examine the local structure of C around its critical points. Let $z = -\frac{1}{t}$ be a coordinate of C centered at $t = \infty$. The Lambert curve is then given by

$$x = \frac{1}{e} (1+z)e^{-z}.$$

We see that the x -projection $\pi : C \rightarrow \mathbb{C}^*$ has a unique critical point q_0 at $z = 0$. Locally around q_0 the curve C is a double cover of \mathbb{C} branched at q_0 . For a point $q \in C$ near q_0 , let us denote by \bar{q} the Galois conjugate point on C that has the same x -coordinate. Let $S(z)$ be the local deck-transformation of the covering $\pi : C \rightarrow \mathbb{C}^*$. Its defining equation

$$(4.11) \quad S(z) - \log(1+S(z)) = z - \log(1+z) = \sum_{m=2}^{\infty} \frac{(-1)^m}{m} z^m$$

has a unique analytic solution other than z itself, which has a branch cut along $(-\infty, -1]$. We note that S is an involution $S(S(z)) = z$, and has a Taylor expansion

$$S(z) = -z + \frac{2}{3}z^2 - \frac{4}{9}z^3 + \frac{44}{135}z^4 - \frac{104}{405}z^5 + \frac{40}{189}z^6 - \frac{7648}{42525}z^7 + \frac{2848}{18225}z^8 + O(z^9)$$

for $|z| < 1$. In terms of the t -coordinate, the involution corresponds to $s(t)$ of (2.9):

$$\begin{cases} t(q) = -\frac{1}{z} = t \\ t(\bar{q}) = -\frac{1}{S(z)} = s(t) \end{cases}.$$

The equation (4.11) defining $S(z)$ translates into a relation

$$(4.12) \quad \frac{dt}{t^2(t-1)} = \frac{ds(t)}{s(t)^2(s(t)-1)} = -dw = -v dv = \pi^* \left(\frac{dx}{x} \right).$$

Using the global coordinate t of the Lambert curve C , the Cauchy differentiation kernel (the one called the *Bergman kernel* in [13, 3]) is defined by

$$(4.13) \quad B(t_1, t_2) = \frac{dt_1 \otimes dt_2}{(t_1 - t_2)^2} = d_{t_1} d_{t_2} \log(t_1 - t_2).$$

We have already encountered it in (4.9) in the expression of $\mathcal{H}_{0,2}(t_1, t_2)$. Following [13], define a 1-form on C by

$$\begin{aligned} dE(q, \bar{q}, t_2) &= \frac{1}{2} \int_q^{\bar{q}} B(\cdot, t_2) = \frac{1}{2} \left(\frac{1}{t_1 - t_2} - \frac{1}{s(t_1) - t_2} \right) dt_2 \\ &= \frac{1}{2} \left(\hat{\xi}_{-1}(s(t_1) - t_2) - \hat{\xi}_{-1}(t_1 - t_2) \right) dt_2, \end{aligned}$$

where the integral is taken with respect to the first variable of $B(t_1, t_2)$ along any path from q to \bar{q} . The natural holomorphic symplectic form on $\mathbb{C}^* \times \mathbb{C}^*$ is given by

$$\Omega = d \log y \wedge d \log x = d \log \left(1 - \frac{1}{t} \right) \wedge d \log x.$$

Again following [3, 13], let us introduce another 1-form on the curve C by

$$\omega(q, \bar{q}) = \int_q^{\bar{q}} \Omega(\cdot, x(q)) = \left(\frac{1}{t} - \frac{1}{s(t)} \right) \frac{dt}{t^2(t-1)} = \left(\hat{\xi}_{-1}(s(t)) - \hat{\xi}_{-1}(t) \right) \frac{dt}{t^2(t-1)}.$$

The kernel operator is defined as the *quotient*

$$K(t_1, t_2) = \frac{dE(q, \bar{q}, t_2)}{\omega(q, \bar{q})} = \frac{1}{2} \cdot \frac{t_1}{t_1 - t_2} \cdot \frac{s(t_1)}{s(t_1) - t_2} \cdot \frac{t_1^2(t_1 - 1)}{dt_1} \otimes dt_2,$$

which is a linear algebraic operator acting on symmetric differential forms on C^ℓ by replacing dt_1 with dt_2 . We note that

$$(4.14) \quad K(t_1, t_2) = K(s(t_1), t_2),$$

which follows from (4.12). In the z -coordinate, the kernel has the expression

$$\begin{aligned} (4.15) \quad K &= -\frac{1}{2} \cdot \frac{1+z}{z} \cdot \frac{1}{(1+zt)(1+S(z)t)} \cdot dt \otimes \frac{1}{dz} \\ &= -\frac{1}{2} \cdot \frac{1+z}{z} \left(\sum_{m=0}^{\infty} (-1)^m \cdot \frac{z^{m+1} - S(z)^{m+1}}{z - S(z)} \cdot t^m \right) dt \otimes \frac{1}{dz} \\ &= -\frac{1}{2} \left(\frac{1}{z} + 1 + \frac{1}{3}(3t-2)tz + \frac{1}{9}(3t-2)tz^2 \right. \\ &\quad \left. + \frac{1}{135}(135t^3 - 180t^2 + 30t + 16)tz^3 + \dots \right) dt \otimes \frac{1}{dz}. \end{aligned}$$

Definition 4.7. The *topological recursion formula* is an inductive mechanism of defining a symmetric ℓ -form

$$W_{g,\ell}(t_L) = W_{g,\ell}(t_1, \dots, t_\ell)$$

on C^ℓ for any given g and ℓ subject to $2g - 2 + \ell > 0$ by

$$(4.16) \quad W_{g,\ell+1}(t_0, t_L) = -\frac{1}{2\pi i} \oint_{\gamma_\infty} \left[K(t, t_0) \left(W_{g-1,\ell+2}(t, s(t), t_L) \right. \right.$$

$$\begin{aligned}
& + \sum_{i=1}^{\ell} \left(W_{g,\ell}(t, t_{L \setminus \{i\}}) \otimes B(s(t), t_i) + W_{g,\ell}(s(t), t_{L \setminus \{i\}}) \otimes B(t, t_i) \right) \\
& \quad + \left[\sum_{\substack{\text{stable terms} \\ g_1+g_2=g, I \sqcup J=L}} W_{g_1,|I|+1}(t, t_I) \otimes W_{g_2,|J|+1}(s(t), t_J) \right].
\end{aligned}$$

Here $t_I = (t_i)_{i \in I}$ for a subset $I \subset L = \{1, 2, \dots, \ell\}$, and the last sum is taken over all partitions of g and disjoint decompositions $I \sqcup J = L$ subject to the stability condition $2g_1 - 1 + |I| > 0$ and $2g_2 - 1 + |J| > 0$. The integration is taken with respect to dt on the contour γ_∞ , which is a positively oriented loop in the complex t -plane of large radius so that $|t| > \max(|t_0|, |s(t_0)|)$ for $t \in \gamma_\infty$.

Now we can state the Bouchard-Mariño conjecture, which we prove in Section 7.

Conjecture 4.8 (Bouchard-Mariño Conjecture [3]). *For every g and ℓ subject to the stability condition $2g - 2 + \ell > 0$, the topological recursion formula (4.16) with the initial condition*

$$(4.17) \quad \begin{cases} W_{0,3}(t_1, t_2, t_3) = dt_1 \otimes dt_2 \otimes dt_3 \\ W_{1,1}(t_1) = \frac{1}{24}(t_1 - 1)(3t_1 + 1) dt_1 \end{cases}$$

gives the Hurwitz differential

$$W_{g,\ell}(t_1, \dots, t_\ell) = d^{\otimes \ell} \widehat{\mathcal{H}}_{g,\ell}(t_1, \dots, t_\ell).$$

Remark 4.9. In the literature [3, 13], the topological recursion is written as

$$(4.18) \quad W_{g,\ell+1}(t_0, t_L) = \text{Res}_{q=\bar{q}} \left[\frac{dE(q, \bar{q}, t_0)}{\omega(q, \bar{q})} \left(W_{g-1,\ell+2}(t(q), t(\bar{q}), t_L) \right. \right. \\ \left. \left. + \sum_{g_1+g_2=g, I \sqcup J=L} W_{g_1,|I|+1}(t(q), t_I) \otimes W_{g_2,|J|+1}(t(\bar{q}), t_J) \right) \right],$$

including *all* possible terms in the second line, with the initial condition

$$(4.19) \quad \begin{cases} W_{0,1}(t_1) = 0 \\ W_{0,2}(t_1, t_2) = B(t_1, t_2). \end{cases}$$

If we single out the stable terms from (4.18), then we obtain (4.16). Although the initial values of $W_{g,\ell}$ given in (4.19) are different from (4.8) and (4.9), the advantage of (4.18) is to be able to include (4.17) as a consequence of the recursion.

Remark 4.10. It is established in [13] that a solution of the topological recursion is a *symmetric* differential form in general. In our case, the RHS of the recursion formula (4.16) does not appear to be symmetric in t_0, t_1, \dots, t_ℓ . We note that our proof of the formula establishes this symmetry because the Hurwitz differential is a symmetric polynomial. This situation is again strikingly similar to the Mizrakhani recursion [35, 36], where the symmetry appears not as a consequence of the recursion, but rather as the geometric nature of the quantity the recursion calculates, namely, the Weil-Petersson volume of the moduli space of bordered hyperbolic surfaces.

5. RESIDUE CALCULATION

In this section we calculate the residues appearing in the recursion formula (4.16). It turns out to be equivalent to the direct image operation with respect to the projection $\pi : C \rightarrow \mathbb{C}$.

Recall that the kernel $K(t, t_0)$ is a rational expression in terms of $t, s(t)$ and t_0 . The function $s(t)$ is an involution $s(s(t)) = t$ defined outside of the slit $[0, 1]$ of the complex t -plane, with logarithmic singularities at 0 and 1. Our idea of computing the residue is to decompose the integration over the loop γ_∞ into the sum of integrations over $\gamma_\infty - \gamma_{[0,1]}$ and $\gamma_{[0,1]}$, where $\gamma_{[0,1]}$ is a positively oriented thin loop containing the interval $[0, 1]$.

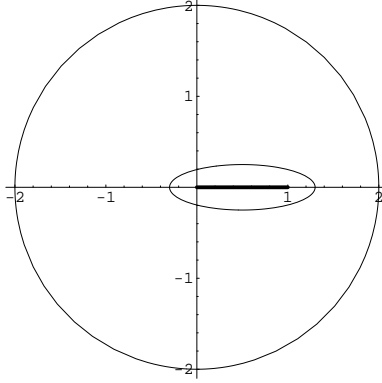


FIGURE 5.1. The contours of integration. γ_∞ is the circle of a large radius, and $\gamma_{[0,1]}$ is the thin loop surrounding the closed interval $[0, 1]$.

Definition 5.1. For a Laurent series $\sum_{n \in \mathbb{Z}} a_n t^n$, we denote

$$\left[\sum_{n \in \mathbb{Z}} a_n t^n \right]_+ = \sum_{n \geq 0} a_n t^n .$$

Theorem 5.2. In terms of the primitives $\hat{\xi}_n(t)$, we have

$$\begin{aligned} (5.1) \quad R_{a,b}(t) &= -\frac{1}{2\pi i} \oint_{\gamma_\infty} K(t', t) \xi_a(t') \xi_b(s(t')) \\ &= \frac{1}{2} \left[\frac{ts(t)}{t-s(t)} \left(\xi_a(t) \hat{\xi}_{b+1}(s(t)) + \hat{\xi}_{a+1}(s(t)) \xi_b(t) \right) \right]_+ . \end{aligned}$$

Similarly, we have

$$\begin{aligned} (5.2) \quad R_n(t, t_i) &= -\frac{1}{2\pi i} \oint_{\gamma_\infty} K(t', t) \left(\xi_n(t') B(s(t'), t_i) + \xi_n(s(t')) B(t', t_i) \right) \\ &= \left[\frac{ts(t)}{t-s(t)} \left(\hat{\xi}_{n+1}(t) B(s(t), t_i) + \hat{\xi}_{n+1}(s(t)) B(t, t_i) \right) \right]_+ . \end{aligned}$$

Proof. In terms of the original z -coordinate of [3], the residue $R_{a,b}(t)$ is simply the coefficient of z^{-1} in $K(t', t) \xi_a(t') \xi_b(s(t'))$, after expanding it in the Laurent series in z . Since $\xi_n(t')$ is a polynomial in $t' = -\frac{1}{z}$, the contribution to the z^{-1} term in the expression is a polynomial in t because of the z -expansion formula (4.15) for the kernel K . Thus we know that $R_{a,b}(t)$ is a polynomial in t .

Let us write $\xi_n(t) = f_n(t)dt$, and let $\gamma_{[0,1]}$ be a positively oriented loop containing the slit $[0, 1]$, as in Figure 5.1. On this compact set we have a bound

$$\left| \frac{ts(t)}{t-s(t)} t^2(t-1)s'(t)f_a(t)f_b(s(t)) \right| < M,$$

since the function is holomorphic outside $[0, 1]$. Choose $|t| \gg 1$. Then we have

$$\begin{aligned} & \left| -\frac{1}{2\pi i} \oint_{\gamma_{[0,1]}} K(t', t) \xi_a(t') \xi_b(s(t')) \right| \\ &= \left| -\frac{1}{2\pi i} \oint_{\gamma_{[0,1]}} \frac{1}{2} \left(\frac{1}{t'-t} - \frac{1}{s(t')-t} \right) \frac{t's(t')}{s(t')-t'} t'^2(t'-1)s'(t')f_a(t')f_b(s(t')) dt' \right| \otimes dt \\ &< \frac{M}{2\pi} \oint_{\gamma_{[0,1]}} \frac{1}{2} \left| \frac{1}{t'-t} - \frac{1}{s(t')-t} \right| dt' \otimes dt \sim \frac{M}{4\pi|t|} dt. \end{aligned}$$

Therefore,

$$\begin{aligned} -\frac{1}{2\pi i} \oint_{\gamma_\infty} K(t', t) \xi_a(t') \xi_b(s(t')) &= -\frac{1}{2\pi i} \oint_{\gamma_\infty - \gamma_{[0,1]}} K(t', t) \xi_a(t') \xi_b(s(t')) + O(t^{-1}) \\ &= \left[-\frac{1}{2\pi i} \oint_{\gamma_\infty - \gamma_{[0,1]}} K(t', t) \xi_a(t') \xi_b(s(t')) \right]_+. \end{aligned}$$

Noticing the relation (4.12) and the fact that $s(t)$ is an involution, we obtain

$$\begin{aligned} & -\frac{1}{2\pi i} \oint_{\gamma_\infty - \gamma_{[0,1]}} K(t', t) \xi_a(t') \xi_b(s(t')) \\ &= -\frac{1}{2\pi i} \oint_{\gamma_\infty - \gamma_{[0,1]}} \frac{1}{2} \left(\frac{1}{t'-t} - \frac{1}{s(t')-t} \right) \frac{t's(t')}{s(t')-t'} t'^2(t'-1)s'(t')f_a(t')f_b(s(t')) dt' \otimes dt \\ &= -\frac{1}{2\pi i} \oint_{\gamma_\infty - \gamma_{[0,1]}} \frac{1}{2} \cdot \frac{1}{t'-t} \cdot \frac{t's(t')}{s(t')-t'} \cdot t'^2(t'-1)s'(t')f_a(t')f_b(s(t')) dt' \otimes dt \\ &\quad + \frac{1}{2\pi i} \oint_{s(\gamma_\infty) - s(\gamma_{[0,1]})} \frac{1}{2} \cdot \frac{1}{s(t')-t} \cdot \frac{t's(t')}{s(t')-t'} \cdot t'^2(t'-1)f_a(t')f_b(s(t')) ds(t') \otimes dt \\ &= \frac{1}{2} \cdot \frac{ts(t)}{t-s(t)} \cdot t^2(t-1)s'(t)f_a(t)f_b(s(t)) dt \\ &\quad + \frac{1}{2} \cdot \frac{s(t)t}{t-s(t)} \cdot s(t)^2(s(t)-1)f_a(s(t))f_b(t) dt \\ &= \frac{ts(t)}{t-s(t)} t^2(t-1)s'(t) \frac{f_a(t)f_b(s(t)) + f_a(s(t))f_b(t)}{2} dt \\ &= \frac{1}{2} \cdot \frac{ts(t)}{t-s(t)} \left(\xi_a(t) \hat{\xi}_{b+1}(s(t)) + \hat{\xi}_{a+1}(s(t)) \xi_b(t) \right) \\ &= \frac{1}{2} \cdot \frac{ts(t)}{t-s(t)} \left(\hat{\xi}'_a(t) \hat{\xi}_{b+1}(s(t)) + \hat{\xi}_{a+1}(s(t)) \hat{\xi}'_b(t) \right) dt \\ &= \frac{1}{2} \cdot \frac{ts(t)}{t-s(t)} \left(\hat{\xi}_{a+1}(t) \hat{\xi}_{b+1}(s(t)) + \hat{\xi}_{a+1}(s(t)) \hat{\xi}_{b+1}(t) \right) \frac{dt}{t^2(t-1)}. \end{aligned}$$

Here we used (2.11) and (4.12) at the last step. The proof of the second residue formula is exactly the same. \square

Remark 5.3. The equation for the kernel (4.14) implies

$$R_{a,b}(t) = R_{b,a}(t) = - [R_{a,b}(s(t))]_{+}.$$

Let us define polynomials $P_{a,b}(t)$ and $P_n(t, t_i)$ by

$$(5.3) \quad P_{a,b}(t)dt = \frac{1}{2} \left[\frac{ts(t)}{t-s(t)} \frac{dt}{t^2(t-1)} \left(\hat{\xi}_{a+1}(t)\hat{\xi}_{b+1}(s(t)) + \hat{\xi}_{a+1}(s(t))\hat{\xi}_{b+1}(t) \right) \right]_{+},$$

$$(5.4) \quad P_n(t, t_i)dt \otimes dt_i = d_{t_i} \left[\frac{ts(t)}{t-s(t)} \left(\frac{\hat{\xi}_{n+1}(t)ds(t)}{s(t)-t_i} + \frac{\hat{\xi}_{n+1}(s(t))dt}{t-t_i} \right) \right]_{+}.$$

Obviously $\deg P_{a,b}(t) = 2(a+b+2)$. To calculate $P_n(t, t_i)$, we use the Laurent series expansion

$$(5.5) \quad \frac{1}{t-t_i} = \frac{1}{t} \sum_{k=0}^{\infty} \left(\frac{t_i}{t} \right)^k,$$

and take the polynomial part in t . We note that it is automatically a polynomial in t_i as well. We thus see that $\deg P_n(t, t_i) = 2n+2$ in each variable.

Theorem 5.4. *The topological recursion formula (4.16) is equivalent to the following equation of symmetric differential forms in $\ell+1$ variables with polynomial coefficients:*

$$\begin{aligned} & \sum_{n, n_L} \langle \tau_n \tau_{n_L} \Lambda_g^{\vee}(1) \rangle_{g, \ell+1} d\hat{\xi}_n(t) \otimes d\hat{\xi}_{n_L}(t_L) \\ &= \sum_{i=1}^{\ell} \sum_{m, n_{L \setminus \{i\}}} \langle \tau_m \tau_{n_{L \setminus \{i\}}} \Lambda_g^{\vee}(1) \rangle_{g, \ell} P_m(t, t_i) dt \otimes dt_i \otimes d\hat{\xi}_{n_{L \setminus \{i\}}}(t_{L \setminus \{i\}}) \\ & \quad + \left(\sum_{a, b, n_L} \langle \tau_a \tau_b \tau_{n_L} \Lambda_{g-1}^{\vee}(1) \rangle_{g-1, \ell+2} \right. \\ & \quad \left. + \sum_{\substack{\text{stable} \\ g_1+g_2=g \\ I \sqcup J=L}} \sum_{\substack{a, n_I \\ b, n_J}} \langle \tau_a \tau_{n_I} \Lambda_{g_1}^{\vee}(1) \rangle_{g_1, |I|+1} \langle \tau_b \tau_{n_J} \Lambda_{g_2}^{\vee}(1) \rangle_{g_2, |J|+1} \right) P_{a,b}(t) dt \otimes d\hat{\xi}_{n_L}(t_L). \end{aligned}$$

Here $L = \{1, 2, \dots, \ell\}$ is an index set, and for a subset $I \subset L$, we denote

$$t_I = (t_i)_{i \in I}, \quad n_I = \{n_i \mid i \in I\}, \quad \tau_{n_I} = \prod_{i \in I} \tau_{n_i}, \quad d\hat{\xi}_{n_I}(t_I) = \bigotimes_{i \in I} \frac{d}{dt_i} \hat{\xi}_{n_i}(t_i) dt_i.$$

The last summation in the formula is taken over all partitions of g and decompositions of L into disjoint subsets $I \sqcup J = L$ subject to the stability condition $2g_1 - 1 + |I| > 0$ and $2g_2 - 1 + |J| > 0$.

Remark 5.5. An immediate observation we can make from (1.5) is the simple form of the formula for the case with one marked point:

$$(5.6) \quad \begin{aligned} & \sum_{n \leq 3g-2} \langle \tau_n \Lambda_g^{\vee}(1) \rangle_{g,1} \frac{d}{dt} \hat{\xi}_n(t) \\ &= \sum_{a+b \leq 3g-4} \left(\langle \tau_a \tau_b \Lambda_{g-1}^{\vee}(1) \rangle_{g-1,2} + \sum_{g_1+g_2=g}^{\text{stable}} \langle \tau_a \Lambda_{g_1}^{\vee}(1) \rangle_{g_1,1} \langle \tau_b \Lambda_{g_2}^{\vee}(1) \rangle_{g_2,1} \right) P_{a,b}(t). \end{aligned}$$

6. ANALYSIS OF THE LAPLACE TRANSFORMS ON THE LAMBERT CURVE

As a preparation for Section 7 where we give a proof of (1.5), in this section we present analysis tools that provide the relation among the Laplace transforms on the Lambert curve (2.7). The mystery of the work of Bouchard-Mariño [3] lies in their $\zeta_n(y)$ -forms that play an effective role in devising the topological recursion for the Hurwitz numbers. We have already identified these differential forms as polynomial forms $d\hat{\xi}_n(t)$, where $\hat{\xi}_n(t)$'s are the Lambert W -function and its derivatives.

Recall Stirling's formula

$$(6.1) \quad \log \Gamma(z) = \frac{1}{2} \log 2\pi + \left(z - \frac{1}{2}\right) \log z - z + \sum_{r=1}^m \frac{B_{2r}}{2r(2r-1)} z^{-2r+1} - \frac{1}{2m} \int_0^\infty \frac{B_{2m}(x - [x])}{(z+x)^{2m}} dx,$$

where m is an arbitrary cut-off parameter, $B_r(s)$ is the Bernoulli polynomial defined by

$$\frac{ze^{zx}}{e^z - 1} = \sum_{n=0}^{\infty} B_n(x) \frac{z^n}{n!},$$

$B_r = B_r(0)$ is the Bernoulli number, and $[x]$ is the largest integer not exceeding $x \in \mathbb{R}$. For $N > 0$, we have

$$e^{-N} \frac{N^{N+n}}{N!} = \frac{1}{\sqrt{2\pi}} N^{n-\frac{1}{2}} \exp\left(-\sum_{r=1}^m \frac{B_{2r}}{2r(2r-1)} N^{-2r+1}\right) \exp\left(\frac{1}{2m} \int_0^\infty \frac{B_{2m}(x - [x])}{(N+x)^{2m}} dx\right).$$

Let us define the coefficients s_k for $k \geq 0$ by

$$(6.2) \quad \sum_{k=0}^{\infty} s_k N^{-k} = \exp\left(-\sum_{r=1}^{\infty} \frac{B_{2r}}{2r(2r-1)} N^{-2r+1}\right) = 1 - \frac{1}{12} N^{-1} + \frac{1}{288} N^{-2} + \frac{139}{51840} N^{-3} - \frac{571}{2488320} N^{-4} + \dots$$

Then for a large N we have an asymptotic expansion

$$(6.3) \quad e^{-N} \frac{N^{N+n}}{N!} \sim \frac{1}{\sqrt{2\pi}} N^{n-\frac{1}{2}} \sum_{k=0}^{\infty} s_k N^{-k}.$$

Definition 6.1. Let us introduce an infinite sequence of Laurent series

$$(6.4) \quad \eta_n(v) = \frac{1}{v} \sum_{k=0}^{\infty} s_k \frac{(2(n-k)-1)!!}{v^{2(n-k)}} = -\eta_n(-v)$$

for every $n \in \mathbb{Z}$, where s_k 's are the coefficients defined in (6.2).

The following lemma relates the polynomial forms $\xi_n(t) = d\hat{\xi}_n(t)$, the functions $\eta_n(v)$, and the Laplace transform.

Proposition 6.2. For $n \geq 0$, we have

$$(6.5) \quad \int_0^\infty e^{-s} \frac{s^{s+n}}{\Gamma(s+1)} e^{-sw} ds = \eta_n(v) + \text{const} + O(w)$$

with respect to the choice of the branch of \sqrt{w} specified by $v = -\sqrt{2w}$ as in (2.8) and (2.15), where $O(w)$ denotes a holomorphic function in $w = \frac{1}{2}v^2$ defined around $w = 0$ which vanishes at $w = 0$. The substitution of (2.15) in $\eta_n(v)$ yields

$$(6.6) \quad \eta_n(v) = \frac{1}{2} \left(\eta_n(v) - \eta_n(-v) \right) = \frac{1}{2} \left(\hat{\xi}_n(t) - \hat{\xi}_n(s(t)) \right),$$

where $s(t)$ is the involution of (2.9). This formula is valid for $n \geq -1$, and in particular, we have a relation between the kernel and $\eta_{-1}(v)$:

$$(6.7) \quad \eta_{-1}(v) = \frac{1}{2} \left(\hat{\xi}_{-1}(t) - \hat{\xi}_{-1}(s(t)) \right) = \frac{1}{2} \frac{t - s(t)}{ts(t)}.$$

More precisely, for $n \geq -1$, we have

$$(6.8) \quad \begin{cases} \eta_n(v) = \hat{\xi}_n(t) + F_n(w) \\ \eta_n(-v) = \hat{\xi}_n(s(t)) + F_n(w) \end{cases},$$

where $F_n(w)$ is a holomorphic function in w .

Proof. From definition (6.4), it is obvious that the series $\eta_n(v)$ satisfies the recursion relation

$$(6.9) \quad \eta_{m+1}(v) = -\frac{1}{v} \frac{d}{dv} \eta_m(v)$$

for all $n \in \mathbb{Z}$. The integral (6.5) also satisfies the same recursion for $n \geq 0$. So choose an $n \geq 0$. We have an estimate

$$e^{-s} \frac{s^{s+n}}{\Gamma(s+1)} = \frac{1}{\sqrt{2\pi}} s^{n-\frac{1}{2}} \sum_{k=0}^n s_k s^{-k} + O(s^{-\frac{3}{2}})$$

that is valid for $s > 1$. Since the integral

$$\int_0^1 e^{-s} \frac{s^{s+n}}{\Gamma(s+1)} e^{-sw} ds$$

is an entire function in w , we have

$$\begin{aligned} \int_0^\infty e^{-s} \frac{s^{s+n}}{\Gamma(s+1)} e^{-sw} ds &= \int_0^1 e^{-s} \frac{s^{s+n}}{\Gamma(s+1)} e^{-sw} ds + \int_1^\infty e^{-s} \frac{s^{s+n}}{\Gamma(s+1)} e^{-sw} ds \\ &= \int_0^\infty \left(\frac{1}{\sqrt{2\pi}} s^{n-\frac{1}{2}} \sum_{k=0}^n s_k s^{-k} \right) e^{-sw} ds + \int_1^\infty O(s^{-\frac{3}{2}}) e^{-sw} ds + \text{const} + O(w) \\ &= \frac{1}{v} \sum_{k=0}^n s_k \frac{(2(n-k)-1)!!}{v^{2(n-k)}} + \text{const} + vO(w) + O(w). \end{aligned}$$

This formula is valid for all $n \geq 0$. Starting it from a large $n \gg 0$ and using the recursion (6.9) backwards, we conclude that the $vO(w)$ terms in the above formula are indeed the positive power terms of $\eta_n(v)$. The principal part of $\eta_n(v)$ does not depend on the addition of positive power terms in $w = \frac{1}{2}v^2$, since $-\frac{1}{v} \frac{d}{dv}$ transforms a positive even power of v to a non-negative even power and does not create any negative powers. This proves (6.5).

Next let us estimate the holomorphic error term $O(w)$ in (6.5). When $n \leq -1$, the Laplace transform (6.5) does not converge. However, the truncated integral

$$\int_1^\infty e^{-s} \frac{s^{s+n}}{\Gamma(s+1)} e^{-sw} ds$$

always converges and defines a holomorphic function in $v = -\sqrt{2w}$, which still satisfies the recursion relation (6.9). Again by the inverse induction, we have

$$(6.10) \quad \int_1^\infty e^{-s} \frac{s^{s+n}}{\Gamma(s+1)} e^{-sw} ds = \eta_n(v) + O(w)$$

for every $n < 0$. Now by the Euler summation formula, for $n \leq -1$ and $Re(w) > 0$, we have

$$(6.11) \quad \int_1^\infty e^{-s} \frac{s^{s+n}}{\Gamma(s+1)} e^{-sw} ds - \sum_{k=2}^\infty e^{-k} \frac{k^{k+n}}{k!} e^{-kw} \\ = -\frac{1}{2} e^{-(w+1)} + \int_1^\infty \left(s - [s] - \frac{1}{2} \right) \frac{d}{ds} \left(e^{-s} \frac{s^{s+n}}{\Gamma(s+1)} e^{-sw} \right) ds.$$

Note that the RHS of (6.11) is holomorphic in w around $w = 0$. From (2.10), (6.10) and (6.11), we establish a comparison formula

$$(6.12) \quad \eta_{-1}(v) - \hat{\xi}_{-1}(t) = F_{-1}(w),$$

where $F_{-1}(w)$ is a holomorphic function in w defined near $w = 0$, and we identify the coordinates t, v and w by the relations (2.16) and (2.15). Note that the relation (2.16) is invariant under the involution

$$(6.13) \quad \begin{cases} v \mapsto -v \\ t \mapsto s(t) \end{cases}.$$

Therefore, we also have

$$\eta_{-1}(-v) - \hat{\xi}_{-1}(s(t)) = F_{-1}(w).$$

Thus we obtain

$$\eta_{-1}(v) = \frac{1}{2} \left(\hat{\xi}_{-1}(t) - \hat{\xi}_{-1}(s(t)) \right),$$

which proves (6.7). Since $-\frac{1}{v} \frac{d}{dv} = t^2(t-1) \frac{d}{dt}$, the recursion relations (6.9) and (2.11) for $\hat{\xi}_n(t)$ are exactly the same. We note that from (4.12) we have

$$-\frac{1}{v} \frac{d}{dv} = t^2(t-1) \frac{d}{dt} = s(t)^2(s(t)-1) \frac{d}{ds(t)}.$$

Therefore, the difference $\hat{\xi}_{n+1}(t) - \hat{\xi}_{n+1}(s(t))$ satisfy the same recursion

$$(6.14) \quad \hat{\xi}_{n+1}(t) - \hat{\xi}_{n+1}(s(t)) = t^2(t-1) \frac{d}{dt} \left(\hat{\xi}_n(t) - \hat{\xi}_n(s(t)) \right).$$

The recursions (6.9) and (6.14), together with the initial condition (6.7), establish (6.6). Application of the differential operator

$$-\frac{1}{v} \frac{d}{dv} = -\frac{d}{dw} = t^2(t-1) \frac{d}{dt}$$

$(n+1)$ -times to (6.12) yields

$$\eta_n(v) - \hat{\xi}_n(t) = F_n(w),$$

where $F_n(w) = (-1)^n \frac{d^n}{dw^n} F_{-1}(w)$ is a holomorphic function in w around $w = 0$. Involution (6.13) then gives

$$\eta_n(-v) - \hat{\xi}_n(s(t)) = F_n(w).$$

This completes the proof of the proposition. \square

As we have noted in Section 5, the residue calculations appearing in the Bouchard-Mariño recursion formula (4.16) are essentially evaluations of the product of ξ -forms at the point t and $s(t)$ on the Lambert curve, if we truncate the result to the polynomial part. In terms of the v -coordinate, these two points correspond to v and $-v$. Thus we have

Corollary 6.3. *The residue polynomials of (5.3) are given by*

$$(6.15) \quad P_{a,b}(t)dt = \frac{1}{2} \left[\frac{ts(t)}{t-s(t)} \frac{dt}{t^2(t-1)} \left(\hat{\xi}_{a+1}(t)\hat{\xi}_{b+1}(s(t)) + \hat{\xi}_{a+1}(s(t))\hat{\xi}_{b+1}(t) \right) \right]_+ \\ = \frac{1}{2} \left[\frac{\eta_{a+1}(v)\eta_{b+1}(v)}{\eta_{-1}(v)} vdv \Big|_{v=v(t)} \right]_+,$$

where the reciprocal of

$$\eta_{-1}(v) = \sum_{k=0}^{\infty} s_k (2(-1-k) - 1)!! v^{2k+1} = -v \left(1 + \sum_{k=1}^{\infty} (-1)^k s_k \frac{1}{(2k+1)!!} v^{2k} \right)$$

is defined by

$$\frac{1}{\eta_{-1}(v)} = -\frac{1}{v} \left(1 + \sum_{m=0}^{\infty} \left(\sum_{k=1}^{\infty} (-1)^{k-1} s_k \frac{1}{(2k+1)!!} v^{2k} \right)^m \right).$$

Proof. Using the formulas established in Proposition 6.2, we compute

$$\frac{1}{2} \frac{ts(t)}{t-s(t)} \frac{dt}{t^2(t-1)} \left(\hat{\xi}_{a+1}(t)\hat{\xi}_{b+1}(s(t)) + \hat{\xi}_{a+1}(s(t))\hat{\xi}_{b+1}(t) \right) \\ = -\frac{ts(t)}{t-s(t)} \frac{dt}{t^2(t-1)} \left(\frac{\hat{\xi}_{a+1}(t) - \hat{\xi}_{a+1}(s(t))}{2} \frac{\hat{\xi}_{b+1}(t) - \hat{\xi}_{b+1}(s(t))}{2} \right. \\ \left. - \frac{\hat{\xi}_{a+1}(t) + \hat{\xi}_{a+1}(s(t))}{2} \frac{\hat{\xi}_{b+1}(t) + \hat{\xi}_{b+1}(s(t))}{2} \right) \\ = -\frac{1}{2\eta_{-1}(v)} \left(\eta_{a+1}(v)\eta_{b+1}(v) - F_{a+1}(w)F_{b+1}(w) \right) (-v)dv \\ = \frac{\eta_{a+1}(v)\eta_{b+1}(v)}{2\eta_{-1}(v)} vdv + (\text{const} + O(w))dv.$$

From (2.15) we see $[(\text{const} + O(w))dv|_{v \rightarrow t}]_+ = 0$. This completes the proof of (6.15). \square

For the terms involving the Cauchy differentiation kernel $B(t_i, t_j)$, we have the following formula.

Proposition 6.4. *As a polynomial in t and t_j , we have the following equality:*

$$(6.16) \quad P_n(t, t_j)dt \otimes dt_j = d_{t_j} \left[\frac{ts(t)}{t-s(t)} \left(\frac{\hat{\xi}_{n+1}(t)ds(t)}{s(t)-t_j} + \frac{\hat{\xi}_{n+1}(s(t))dt}{t-t_j} \right) \right]_+ \\ = d_{t_j} \left[\frac{\eta_{n+1}(v_j)}{\eta_{-1}(v)} \cdot \frac{1}{v^2} \sum_{m=0}^{\text{finite}} \left(\frac{v_j}{v} \right)^{2m} vdv \Big|_{\substack{v=v(t) \\ v_j=v(t_j)}} \right]_+.$$

In the RHS we first evaluate the expression at $v = v(t)$ and $v_j = v(t_j)$, then expand it as a series in $\frac{1}{t}$ and $\frac{1}{t_j}$, and finally truncate it as a polynomial in both t and t_j .

Proof. From the formulas for $\hat{\xi}_n(t)$ and $\eta_n(v)$, we know that both expressions have the same degree $2n + 2$ in t and t_j . Since the powers of v_j in the summation $\sum_{m=0}^{\text{finite}} \left(\frac{v_j}{v}\right)^{2m}$ is non-negative, clearly we have

$$d_{t_j} \left[\frac{\eta_{n+1}(v)}{\eta_{-1}(v)} \cdot \frac{1}{v^2} \sum_{m=0}^{\text{finite}} \left(\frac{v_j}{v}\right)^{2m} v dv \Big|_{\substack{v=v(t) \\ v_j=v(t_j)}} \right]_+ = 0.$$

Thus we can replace the RHS of (6.16) by

$$d_{t_j} \left[\frac{\eta_{n+1}(v) - \eta_{n+1}(v_j)}{\eta_{-1}(v)} \cdot \frac{1}{v^2} \sum_{m=0}^{\text{finite}} \left(\frac{v_j}{v}\right)^{2m} (-v) dv \Big|_{\substack{v=v(t) \\ v_j=v(t_j)}} \right]_+.$$

Since the degree of $\eta_{n+1}(v(t_j))$ in t_j is $2n + 3$, the finite sum in m of the above expression contributes nothing for $m > n + 2$. Therefore,

$$\begin{aligned} & d_{t_j} \left[\frac{\eta_{n+1}(v) - \eta_{n+1}(v_j)}{\eta_{-1}(v)} \cdot \frac{1}{v^2} \sum_{m=0}^{\text{finite}} \left(\frac{v_j}{v}\right)^{2m} (-v) dv \Big|_{\substack{v=v(t) \\ v_j=v(t_j)}} \right]_+ \\ &= d_{t_j} \left[\frac{ts(t)}{t-s(t)} \left(\frac{\hat{\xi}_{n+1}(t) - \hat{\xi}_{n+1}(t_j)}{w-w_j} + \frac{F_{n+1}(w) - F_{n+1}(w_j)}{w-w_j} \right) (-dw) \Big|_{\substack{v=v(t) \\ v_j=v(t_j)}} \right]_+ \\ &= d_{t_j} \left[\frac{ts(t)}{t-s(t)} \frac{\hat{\xi}_{n+1}(t) - \hat{\xi}_{n+1}(t_j)}{w-w_j} (-dw) \Big|_{\substack{v=v(t) \\ v_j=v(t_j)}} \right]_+ \end{aligned}$$

because of (6.8). We also used the fact that

$$\frac{1}{v^2} \sum_{m=0}^{\text{finite}} \left(\frac{v_j}{v}\right)^{2m} v dv = \frac{1}{2} \frac{dw}{w-w_j} + O(w_j^{n+2}) dw,$$

and that $\frac{F_{n+1}(w) - F_{n+1}(w_j)}{w-w_j}$ is holomorphic along $w = w_j$. Let us use once again $-\hat{\xi}_{n+1}(t) = \hat{\xi}_{n+1}(s(t)) + 2F_{n+1}(w)$ and $-\frac{dw}{w-w_j} = -\frac{2v dv}{v^2 - v_j^2} = \left(\frac{1}{-v-v_j} - \frac{1}{v-v_j} \right) dv$. We obtain

$$\begin{aligned} & d_{t_j} \left[\frac{ts(t)}{t-s(t)} \frac{\hat{\xi}_{n+1}(t) - \hat{\xi}_{n+1}(t_j)}{w-w_j} (-dw) \Big|_{\substack{v=v(t) \\ v_j=v(t_j)}} \right]_+ \\ &= d_{t_j} \left[\frac{ts(t)}{t-s(t)} \left(\frac{\hat{\xi}_{n+1}(t) - \hat{\xi}_{n+1}(t_j)}{-v-v_j} \frac{dv}{ds(t)} ds(t) \right) \Big|_{\substack{v=v(t) \\ v_j=v(t_j)}} \right]_+ \\ &+ d_{t_j} \left[\frac{ts(t)}{t-s(t)} \left(\frac{\hat{\xi}_{n+1}(s(t)) - \hat{\xi}_{n+1}(s(t_j))}{v-v_j} \frac{dv}{dt} dt \right) \Big|_{\substack{v=v(t) \\ v_j=v(t_j)}} \right]_+ \end{aligned}$$

$$\begin{aligned}
&= d_{t_j} \left[\frac{ts(t)}{t-s(t)} \left(\frac{\hat{\xi}_{n+1}(t) - \hat{\xi}_{n+1}(t_j)}{s(t) - t_j} \frac{s(t) - t_j}{v(s(t)) - v(t_j)} \frac{dv(s(t))}{ds(t)} ds(t) \right) \right]_+ \\
&\quad + d_{t_j} \left[\frac{ts(t)}{t-s(t)} \left(\frac{\hat{\xi}_{n+1}(s(t)) - \hat{\xi}_{n+1}(s(t_j))}{t - t_j} \frac{t - t_j}{v(t) - v(t_j)} \frac{dv(t)}{dt} dt \right) \right]_+.
\end{aligned}$$

Here we remark that

$$\begin{aligned}
d_{t_j} \left[\frac{ts(t)}{t-s(t)} \left(\frac{\hat{\xi}_{n+1}(t) - \hat{\xi}_{n+1}(t_j)}{s(t) - t_j} ds(t) + \frac{\hat{\xi}_{n+1}(s(t)) - \hat{\xi}_{n+1}(s(t_j))}{t - t_j} dt \right) \right]_+ \\
= d_{t_j} \left[\frac{ts(t)}{t-s(t)} \left(\frac{\hat{\xi}_{n+1}(t)}{s(t) - t_j} ds(t) + \frac{\hat{\xi}_{n+1}(s(t))}{t - t_j} dt \right) \right]_+,
\end{aligned}$$

because the extra terms in the LHS do not contribute to the polynomial part in t . Therefore, it suffices to show that

$$\begin{aligned}
(6.17) \quad &d_{t_j} \left[\frac{ts(t)}{t-s(t)} \frac{\hat{\xi}_{n+1}(t) - \hat{\xi}_{n+1}(t_j)}{s(t) - t_j} \left(\frac{s(t) - t_j}{v(s(t)) - v(t_j)} \frac{dv(s(t))}{ds(t)} - 1 \right) ds(t) \right]_+ \\
&+ d_{t_j} \left[\frac{ts(t)}{t-s(t)} \frac{\hat{\xi}_{n+1}(s(t)) - \hat{\xi}_{n+1}(s(t_j))}{t - t_j} \left(\frac{t - t_j}{v(t) - v(t_j)} \frac{dv(t)}{dt} - 1 \right) dt \right]_+ \\
&= d_{t_j} \left[\frac{ts(t)}{t-s(t)} \left(\hat{\xi}_{n+1}(t) - \hat{\xi}_{n+1}(t_j) \right) \left(\frac{-dv(t)}{-v(t) - v(t_j)} - \frac{ds(t)}{s(t) - t_j} \right) \right]_+ \\
&+ d_{t_j} \left[\frac{ts(t)}{t-s(t)} \left(\hat{\xi}_{n+1}(s(t)) - \hat{\xi}_{n+1}(s(t_j)) \right) \left(\frac{dv(t)}{v(t) - v(t_j)} - \frac{dt}{t - t_j} \right) \right]_+ \\
&= d_{t_j} \left[\frac{ts(t)}{t-s(t)} \left(\hat{\xi}_{n+1}(t) - \hat{\xi}_{n+1}(t_j) \right) \left(\frac{-dv(t)}{-v(t) - v(t_j)} - \frac{ds(t)}{s(t) - t_j} \right) \right]_+ \\
&\quad - d_{t_j} \left[\frac{ts(t)}{t-s(t)} \left(\hat{\xi}_{n+1}(t) - \hat{\xi}_{n+1}(t_j) \right) \left(\frac{dv(t)}{v(t) - v(t_j)} - \frac{dt}{t - t_j} \right) \right]_+ = 0,
\end{aligned}$$

in light of (6.8). At this stage we need the following Lemma:

Lemma 6.5. *For every $n \geq 0$ we have the identity*

$$(6.18) \quad 0 = d_{t_j} \left[(t^n - t_j^n) \left(\frac{-dv}{-v - v_j} - \frac{ds(t)}{s(t) - t_j} - \frac{dv}{v - v_j} + \frac{dt}{t - t_j} \right) \Big|_{\substack{v=v(t) \\ v_j=v(t_j)}} \right]_+.$$

Proof of Lemma. First let us recall that $B(t, t_j) = d_{t_j} \left(\frac{dt}{t - t_j} \right)$ is the Cauchy differentiation kernel of the Lambert curve C , which is a symmetric quadratic form on $C \times C$ with second order poles along the diagonal $t = t_j$. The function $v = v(t)$ is a local coordinate change, which transforms $v = 0$ to $t = \infty$. Therefore, the form $\frac{dv}{v - v_j} - \frac{dt}{t - t_j}$ is a meromorphic 1-form locally defined on $C \times C$, which is actually holomorphic on a neighborhood of the diagonal and vanishes on the diagonal. Therefore, it has the Taylor series expansion in $\frac{1}{t}$ and $\frac{1}{t_j}$ without a constant term.

Since $v(s(t)) = -v(t)$, the form $\frac{dv}{v + v_j} - \frac{ds(t)}{s(t) - t_j}$ is the pull-back of $\frac{dv}{v - v_j} - \frac{dt}{t - t_j}$ via the local involution $s : C \rightarrow C$ that is applied to the first factor. Thus this is again a local

holomorphic 1-form on $C \times C$ and has exactly the same Taylor expansion in $\frac{1}{s(t)}$ and $\frac{1}{t_j}$. Therefore, in the $\frac{1}{t_j}$ -expansion of the difference $\frac{-dv}{-v-v_j} - \frac{ds(t)}{s(t)-t_j} - \frac{dv}{v-v_j} + \frac{dt}{t-t_j}$, each coefficient does not contain a constant term because it is cancelled by taking the difference. It implies that the difference 1-form does not contain any terms without $\frac{1}{t}$. In other words, we have

$$(6.19) \quad 0 = \left[t_j^n \left(\frac{-dv}{-v-v_j} - \frac{ds(t)}{s(t)-t_j} - \frac{dv}{v-v_j} + \frac{dt}{t-t_j} \right) \Big|_{\substack{v=v(t) \\ v_j=v(t_j)}} \right]_+.$$

Note that we have an expression of the form

$$(6.20) \quad \left[\frac{-dv}{-v-v_j} - \frac{ds(t)}{s(t)-t_j} - \frac{dv}{v-v_j} + \frac{dt}{t-t_j} \right]_{\substack{v=v(t) \\ v_j=v(t_j)}} = f(t^{-1}) + \frac{1}{t_j} F\left(\frac{1}{t}, \frac{1}{t_j}\right),$$

where f is a power series in one variable and F a power series in two variables. Therefore,

$$(6.21) \quad 0 = d_{t_j} \left[t^n \left(\frac{-dv}{-v-v_j} - \frac{ds(t)}{s(t)-t_j} - \frac{dv}{v-v_j} + \frac{dt}{t-t_j} \right) \Big|_{\substack{v=v(t) \\ v_j=v(t_j)}} \right]_+.$$

Lemma follows from (6.19) and (6.21). \square

It is obvious from (6.19) and (6.20) that

$$(6.22) \quad 0 = d_{t_j} \left[(t^n - t_j^n) \frac{ts(t)}{t-s(t)} \left(\frac{-dv}{-v-v_j} - \frac{ds(t)}{s(t)-t_j} - \frac{dv}{v-v_j} + \frac{dt}{t-t_j} \right) \Big|_{\substack{v=v(t) \\ v_j=v(t_j)}} \right]_+.$$

Since $\hat{\xi}_{n+1}(t)$ is a polynomial in t , (6.17) follows from (6.22). This completes the proof of the proposition. \square

7. PROOF OF THE BOUCHARD-MARIÑO TOPOLOGICAL RECURSION FORMULA

In this section we prove (1.5). Since it is equivalent to Conjecture 4.8, we establish the Bouchard-Mariño conjecture. Our procedure is to take the direct image of the equation (3.12) on the Lambert curve via the projection $\pi : C \rightarrow \mathbb{C}$. To compute the direct image, it is easier to switch to the coordinate v of the Lambert curve, because of the relation (2.17). This simple relation tells us that the direct image of a function $f(v)$ on C via the projection $\pi : C \rightarrow \mathbb{C}$ is just the even powers of the v -variable in $f(v)$:

$$\pi_* f = f(v) + f(-v).$$

After taking the direct image, we extract the principal part of the meromorphic function in v , which becomes the Bouchard-Mariño recursion (1.5). To this end, we utilize the formulas developed in Section 6.

Here again let us consider the $\ell = 1$ case first. We start with Proposition 3.4.

Theorem 7.1. *We have the following equation*

$$(7.1) \quad - \sum_{n \leq 3g-2} \langle \tau_n \Lambda_g^\vee(1) \rangle_{g,1} \eta_{-1}(v) \eta_{n+1}(v) = \frac{1}{2} \sum_{a+b \leq 3g-4} \left[\langle \tau_a \tau_b \Lambda_{g-1}^\vee(1) \rangle_{g-1,2} \right. \\ \left. + \sum_{\substack{\text{stable} \\ g_1+g_2=g}} \langle \tau_a \Lambda_{g_1}^\vee(1) \rangle_{g_1,1} \langle \tau_b \Lambda_{g_2}^\vee(1) \rangle_{g_2,1} \right] \left(\eta_{a+1}(v) \eta_{b+1}(v) + O_w(1) \right),$$

where $O_w(1)$ denotes a holomorphic function in $w = \frac{1}{2}v^2$.

Proof. We use (6.8) to change from the t -variables to the v -variables. The function factor of the LHS of (3.6) becomes

$$(2g-1)\eta_n(v) + \eta_{n+1}(v) - \eta_{-1}(v)\eta_{n+1}(v) + v f_L(w) + \text{const} + O(w),$$

where $f_L(w)$ is a Laurent series in w . The function factor of the RHS is

$$\eta_{a+1}(v)\eta_{b+1}(v) + v f_R(w) + \text{const} + O(w),$$

where $f_R(w)$ is another Laurent series in w . We note that the product of two η_n -functions is a Laurent series in w . Therefore, extracting the principal part of the Laurent series in w , we obtain

$$\begin{aligned} - \sum_{n \leq 3g-2} \langle \tau_n \Lambda_g^\vee(1) \rangle_{g,1} \eta_{-1}(v) \eta_{n+1}(v) &= \frac{1}{2} \sum_{a+b \leq 3g-4} \left[\langle \tau_a \tau_b \Lambda_{g-1}^\vee(1) \rangle_{g-1,2} \right. \\ &\quad \left. + \sum_{g_1+g_2=g}^{\text{stable}} \langle \tau_a \Lambda_{g_1}^\vee(1) \rangle_{g_1,1} \langle \tau_b \Lambda_{g_2}^\vee(1) \rangle_{g_2,1} \right] \left(\eta_{a+1}(v) \eta_{b+1}(v) + \text{const} + O(w) \right), \end{aligned}$$

which completes the proof of the theorem. \square

Corollary 7.2. *The cut-and-join equation (3.5) for the case of $\ell = 1$ implies the topological recursion (5.6).*

Proof. Going back to the t -coordinates and using (2.10), (2.11), and (6.8) in (7.1), we establish

$$(7.2) \quad \sum_{n \leq 3g-2} \langle \tau_n \Lambda_g^\vee(1) \rangle_{g,1} \xi_n(t) = \frac{1}{2} \sum_{a+b \leq 3g-4} \left(\langle \tau_a \tau_b \Lambda_{g-1}^\vee(1) \rangle_{g-1,2} \right. \\ \left. + \sum_{g_1+g_2=g}^{\text{stable}} \langle \tau_a \Lambda_{g_1}^\vee(1) \rangle_{g_1,1} \langle \tau_b \Lambda_{g_2}^\vee(1) \rangle_{g_2,1} \right) \left[\frac{\eta_{a+1}(v) \eta_{b+1}(v)}{\eta_{-1}(v)} v dv \Big|_{v=v(t)} \right]_+,$$

since

$$\left[\frac{\text{const} + O(w)}{\eta_{-1}(v)} v dv \Big|_{v=v(t)} \right]_+ = 0.$$

From Corollary 6.3, we conclude that (7.2) is identical to (5.6). This completes the proof of the topological recursion for $\ell = 1$. \square

We are now ready to give a proof of (1.5). The starting point is the Laplace transform of the cut-and-join equation, as we have established in Theorem 3.7. Since we are interested in the *principal part* of the formula in the v -coordinate expansion, in what follows we ignore all terms that contain any positive powers of one of the v_i 's.

First let us deal with the unstable $(0, 2)$ -terms computed in (3.9). Using (6.9), we find

$$-\frac{\partial}{\partial w_i} \widehat{\mathcal{H}}_{0,2}(t_i, t_j) \equiv -\frac{1}{v_i} \frac{\partial}{\partial v_i} \log(\eta_{-1}(v_i) - \eta_{-1}(v_j)) \equiv \frac{\eta_0(v_i)}{\eta_{-1}(v_i) - \eta_{-1}(v_j)}$$

modulo holomorphic functions in w_i and w_j . Therefore, the result of the coordinate change from the t -coordinates to the v -coordinates is the following:

$$(7.3) \quad \sum_{n_L} \langle \tau_{n_L} \Lambda_g^\vee(1) \rangle_{g,\ell} \left((2g-2+\ell)\eta_{n_L}(v_L) + \sum_{i=1}^{\ell} \eta_{m_i+1}(v_i) \eta_{L \setminus \{i\}}(v_{L \setminus \{i\}}) \right)$$

$$\begin{aligned}
& - \sum_{i=1}^{\ell} \eta_{-1}(v_i) \eta_{m_i+1}(v_i) \eta_{n_{L \setminus \{i\}}}(v_{L \setminus \{i\}}) \\
& \equiv \frac{1}{2} \sum_{i=1}^{\ell} \sum_{n_{L \setminus \{i\}}} \sum_{a,b} \left(\langle \tau_a \tau_b \tau_{n_{L \setminus \{i\}}} \Lambda_{g-1}^{\vee}(1) \rangle_{g-1, \ell+1} \right. \\
& + \sum_{\substack{\text{stable} \\ g_1+g_2=g \\ I \sqcup J = L \setminus \{i\}}} \langle \tau_a \tau_{n_I} \Lambda_{g_1}^{\vee}(1) \rangle_{g_1, |I|+1} \langle \tau_b \tau_{n_J} \Lambda_{g_2}^{\vee}(1) \rangle_{g_2, |J|+1} \left. \right) \eta_{a+1}(v_i) \eta_{b+1}(v_i) \eta_{n_{L \setminus \{i\}}}(v_{L \setminus \{i\}}) \\
& + \frac{1}{2} \sum_{i=1}^{\ell} \sum_{j \neq i} \sum_{n_{L \setminus \{i,j\}}} \sum_m \langle \tau_{n_{L \setminus \{i,j\}}} \tau_m \Lambda_g^{\vee}(1) \rangle_{g, \ell-1} \eta_{n_{L \setminus \{i,j\}}}(v_{L \setminus \{i,j\}}) \\
& \quad \times \frac{\eta_{m+1}(v_i) \eta_0(v_i) - \eta_{m+1}(v_j) \eta_0(v_j)}{\eta_{-1}(v_i) - \eta_{-1}(v_j)},
\end{aligned}$$

again modulo terms containing any holomorphic terms in any of w_k 's. At this stage we take the direct image with respect to the projection $\pi : C \rightarrow \mathbb{C}$ applied to the v_1 -coordinate component, and then restrict the result to its principal part, meaning that we throw away any terms that contain non-negative powers of any of the v_k 's. Thanks to (6.8), only those terms containing $\eta_a(v_1) \eta_b(v_1)$ survive. The last term of (7.3) requires a separate care. We find

$$\begin{aligned}
& \frac{1}{2} \left(\frac{\eta_{m+1}(v_1) \eta_0(v_1) - \eta_{m+1}(v_j) \eta_0(v_j)}{\eta_{-1}(v_1) - \eta_{-1}(v_j)} + \frac{\eta_{m+1}(v_1) \eta_0(v_1) - \eta_{m+1}(v_j) \eta_0(v_j)}{-\eta_{-1}(v_1) - \eta_{-1}(v_j)} \right) \\
& = -(\eta_{m+1}(v_1) \eta_0(v_1) - \eta_{m+1}(v_j) \eta_0(v_j)) \frac{\eta_{-1}(v_j)}{\eta_{-1}(v_1)^2 - \eta_{-1}(v_j)^2} \\
& \equiv \frac{\eta_{m+1}(v_j)}{v_1^2 - v_j^2} = \frac{\eta_{m+1}(v_j)}{v_1^2} \sum_{k=0}^{\infty} \left(\frac{v_j}{v_1} \right)^{2k},
\end{aligned}$$

modulo terms containing non-negative terms in v_j . Thus by taking the direct image and reducing to the principal part, (7.3) is greatly simplified. We have obtained:

Theorem 7.3.

$$\begin{aligned}
(7.4) \quad & - \sum_{n_L} \langle \tau_{n_L} \Lambda_g^{\vee}(1) \rangle_{g, \ell} \eta_{-1}(v_1) \eta_{m_1+1}(v_1) \eta_{n_{L \setminus \{1\}}}(v_{L \setminus \{1\}}) \\
& \equiv \frac{1}{2} \sum_{n_{L \setminus \{1\}}} \sum_{a,b} \left(\langle \tau_a \tau_b \tau_{n_{L \setminus \{1\}}} \Lambda_{g-1}^{\vee}(1) \rangle_{g-1, \ell+1} \right. \\
& + \sum_{\substack{\text{stable} \\ g_1+g_2=g \\ I \sqcup J = L \setminus \{1\}}} \langle \tau_a \tau_{n_I} \Lambda_{g_1}^{\vee}(1) \rangle_{g_1, |I|+1} \langle \tau_b \tau_{n_J} \Lambda_{g_2}^{\vee}(1) \rangle_{g_2, |J|+1} \left. \right) \eta_{a+1}(v_1) \eta_{b+1}(v_1) \eta_{n_{L \setminus \{1\}}}(v_{L \setminus \{1\}}) \\
& + \frac{1}{2} \sum_{j \geq 1} \sum_{n_{L \setminus \{1,j\}}} \sum_m \langle \tau_{n_{L \setminus \{1,j\}}} \tau_m \Lambda_g^{\vee}(1) \rangle_{g, \ell-1} \eta_{n_{L \setminus \{1,j\}}}(v_{L \setminus \{1,j\}}) \frac{\eta_{m+1}(v_j)}{v_1^2} \sum_{k=0}^{\text{finite}} \left(\frac{v_j}{v_1} \right)^{2k}
\end{aligned}$$

modulo terms with holomorphic factors in v_k .

We note that only finitely many terms of the expansion contributes in the last term of (7.4). Appealing to Corollary 6.3 and Proposition 6.4, we obtain (1.5), after switching back to the t -coordinates. We have thus completed the proof of the Bouchard-Mariño conjecture [3].

APPENDIX. EXAMPLES OF LINEAR HODGE INTEGRALS AND HURWITZ NUMBERS

In this Appendix we give a few examples of linear Hodge integrals and Hurwitz numbers computed by Michael Reinhard.

$g = 2$						
$\ell = 1$	$\langle \tau_3 \lambda_1 \rangle_{2,1}$	$\frac{1}{480}$				
$\ell = 2$	$\langle \tau_2^2 \lambda_1 \rangle_{2,2}$	$\frac{5}{576}$				
$g = 3$						
$\ell = 1$	$\langle \tau_6 \lambda_1 \rangle_{3,1}$	$\frac{7}{138\,240}$	$\langle \tau_5 \lambda_2 \rangle_{3,1}$	$\frac{41}{580\,608}$		
$\ell = 2$	$\langle \tau_2 \tau_5 \lambda_1 \rangle_{3,2}$	$\frac{323}{483\,840}$	$\langle \tau_2 \tau_4 \lambda_2 \rangle_{3,2}$	$\frac{2329}{2\,903\,040}$		
	$\langle \tau_3 \tau_4 \lambda_1 \rangle_{3,2}$	$\frac{19}{17\,920}$	$\langle \tau_3^2 \lambda_2 \rangle_{3,2}$	$\frac{1501}{1\,451\,520}$		
$\ell = 3$	$\langle \tau_2^2 \tau_4 \lambda_1 \rangle_{3,3}$	$\frac{541}{60\,480}$	$\langle \tau_2 \tau_3^3 \lambda_1 \rangle_{3,3}$	$\frac{89}{7680}$	$\langle \tau_2^2 \tau_3 \lambda_2 \rangle_{3,3}$	$\frac{859}{96\,768}$
$\ell = 4$	$\langle \tau_2^3 \tau_3 \lambda_1 \rangle_{3,4}$	$\frac{395}{3456}$	$\langle \tau_2^4 \lambda_2 \rangle_{3,4}$	$\frac{17}{192}$		
$g = 4$						
$\ell = 1$	$\langle \tau_9 \lambda_1 \rangle_{4,1}$	$\frac{1}{1\,244\,160}$	$\langle \tau_8 \lambda_2 \rangle_{4,1}$	$\frac{1357}{696\,729\,600}$	$\langle \tau_7 \lambda_3 \rangle_{4,1}$	$\frac{13}{6\,220\,800}$
$\ell = 2$	$\langle \tau_2 \tau_8 \lambda_1 \rangle_{4,2}$	$\frac{841}{38\,707\,200}$	$\langle \tau_2 \tau_7 \lambda_2 \rangle_{4,2}$	$\frac{33\,391}{696\,729\,600}$	$\langle \tau_3 \tau_5 \lambda_3 \rangle_{4,2}$	$\frac{2609}{29\,030\,400}$
	$\langle \tau_3 \tau_7 \lambda_1 \rangle_{4,2}$	$\frac{221}{4\,147\,200}$	$\langle \tau_3 \tau_6 \lambda_2 \rangle_{4,2}$	$\frac{1153}{11\,059\,200}$	$\langle \tau_4^2 \lambda_3 \rangle_{4,2}$	$\frac{6421}{58\,060\,800}$
	$\langle \tau_4 \tau_6 \lambda_1 \rangle_{4,2}$	$\frac{517}{5\,806\,080}$	$\langle \tau_4 \tau_5 \lambda_2 \rangle_{4,2}$	$\frac{979}{6\,451\,200}$		
	$\langle \tau_5^2 \lambda_1 \rangle_{4,2}$	$\frac{1223}{11\,612\,160}$	$\langle \tau_2 \tau_6 \lambda_3 \rangle_{4,2}$	$\frac{5477}{116\,121\,600}$		
$\ell = 3$	$\langle \tau_2^2 \tau_7 \lambda_1 \rangle_{4,3}$	$\frac{3487}{5\,806\,080}$	$\langle \tau_3 \tau_4^2 \lambda_1 \rangle_{4,3}$	$\frac{137}{46\,080}$	$\langle \tau_3^2 \tau_4 \lambda_2 \rangle_{4,3}$	$\frac{58\,951}{16\,588\,800}$
	$\langle \tau_2 \tau_3 \tau_6 \lambda_1 \rangle_{4,3}$	$\frac{50\,243}{38\,707\,200}$	$\langle \tau_2^2 \tau_6 \lambda_2 \rangle_{4,3}$	$\frac{137\,843}{116\,121\,600}$	$\langle \tau_2^2 \tau_5 \lambda_3 \rangle_{4,3}$	$\frac{241}{230\,400}$
	$\langle \tau_2 \tau_4 \tau_5 \lambda_1 \rangle_{4,3}$	$\frac{2597}{1\,382\,400}$	$\langle \tau_2 \tau_3 \tau_5 \lambda_2 \rangle_{4,3}$	$\frac{577}{258\,048}$	$\langle \tau_2 \tau_3 \tau_4 \lambda_3 \rangle_{4,3}$	$\frac{27\,821}{16\,588\,800}$
	$\langle \tau_3^2 \tau_5 \lambda_1 \rangle_{4,3}$	$\frac{3359}{1\,382\,400}$	$\langle \tau_2 \tau_4^2 \lambda_2 \rangle_{4,3}$	$\frac{2657}{967\,680}$	$\langle \tau_3^3 \lambda_3 \rangle_{4,3}$	$\frac{4531}{2\,073\,600}$
$g = 5$						
$\ell = 1$	$\langle \tau_{12} \lambda_1 \rangle_{5,1}$	$\frac{1}{106\,168\,320}$	$\langle \tau_{10} \lambda_3 \rangle_{5,1}$	$\frac{71}{1\,114\,767\,360}$		
	$\langle \tau_{11} \lambda_2 \rangle_{5,1}$	$\frac{577}{16\,721\,510\,400}$	$\langle \tau_9 \lambda_4 \rangle_{5,1}$	$\frac{21\,481}{367\,873\,228\,800}$		

TABLE 1. Examples of linear Hodge integrals.

Some examples of $g = 5$ Hurwitz numbers:

$$\begin{aligned} h_{5,(1)} &= 0 & h_{5,(4)} &= 272\,097\,280 \\ h_{5,(2)} &= 1/2 & h_{5,(5)} &= 333\,251\,953\,125 \\ h_{5,(3)} &= 59\,049 & h_{5,(6)} &= 202\,252\,053\,177\,720 \end{aligned}$$

$h_{g,\mu}$	$g = 1$	$g = 2$	$g = 3$	$g = 4$
(1)	0	0	0	0
(2)	1/2	1/2	1/2	1/2
(1, 1)	1/2	1/2	1/2	1/2
(3)	9	81	729	6561
(2, 1)	40	364	3280	29 524
(1, 1, 1)	40	364	3280	29 524
(4)	160	5824	209 920	7 558 144
(3, 1)	1215	45 927	1 673 055	60 407 127
(2, 2)	480	17 472	629 760	22 674 432
(2, 1, 1)	5460	206 640	7 528 620	271 831 560
(1, 1, 1, 1)	5460	206 640	7 528 620	
(5)	3125	328 125	33 203 125	3 330 078 125
(4, 1)	35 840	3 956 736	409 108 480	41 394 569 216
(3, 2)	26 460	2 748 816	277 118 820	27 762 350 616
(3, 1, 1)	234 360	26 184 060	2 719 617 120	275 661 886 500
(2, 2, 1)	188 160	20 160 000	2 059 960 320	207 505 858 560
(2, 1, 1, 1)	1 189 440	131 670 000	13 626 893 280	
(1, 1, 1, 1, 1)	1 189 440	131 670 000		
(6)	68 040	16 901 136	3 931 876 080	895 132 294 056
(5, 1)	1 093 750	287 109 375	68 750 000 000	15 885 009 765 625
(4, 2)	788 480	192 783 360	44 490 434 560	10 093 234 511 360
(4, 1, 1)	9 838 080	2 638 056 960	638 265 788 160	148 222 087 453 440
(3, 3)	357 210	86 113 125	19 797 948 720	4 487 187 539 835
(3, 2, 1)	14 696 640	3 710 765 520	872 470 478 880	199 914 163 328 880
(3, 1, 1, 1)	65 998 800	17 634 743 280	4 259 736 280 800	
(2, 2, 2)	2 016 000	486 541 440	111 644 332 800	25 269 270 586 560
(2, 2, 1, 1)	80 438 400	20 589 085 440	4 874 762 692 800	
(2, 1, 1, 1, 1)	382 536 000	100 557 737 280		
(1, 1, 1, 1, 1, 1)	382 536 000			

TABLE 2. Examples of Hurwitz numbers for $1 \leq g \leq 4$ and $|\mu| \leq 6$.

REFERENCES

- [1] G. Borot, B. Eynard, M. Mulase and B. Safnuk, Hurwitz numbers, matrix models and topological recursion, to appear in *Journal of Geometry and Physics* (2011).
- [2] V. Bouchard, A. Klemm, M. Mariño, and S. Pasquetti, *Remodeling the B-model*, *Commun. Math. Phys.* **287**, 117–178 (2008).
- [3] V. Bouchard and M. Mariño, *Hurwitz numbers, matrix models and enumerative geometry*, *Proc. Symposia Pure Math.* **78**, 263–283 (2008).

- [4] L. Chen, Y. Li, and K. Liu, *Localization, Hurwitz numbers and the Witten conjecture*, arXiv:math.AG/0609263 [math.AG] (2006).
- [5] R. Dijkgraaf, *Intersection Theory, Integrable Hierarchies and Topological Field Theory*, New symmetry principles in quantum field theory (Cargèse, 1991), 95–158, NATO Adv. Sci. Inst. Ser. B Phys., 295, Plenum, New York, 1992.
- [6] R. Dijkgraaf and C. Vafa, *Two Dimensional Kodaira-Spencer Theory and Three Dimensional Chern-Simons Gravity*, arXiv:0711.1932 [hep-th].
- [7] R. Dijkgraaf, E. Verlinde, and H. Verlinde, *Loop equations and Virasoro constraints in non-perturbative two-dimensional quantum gravity*, Nucl. Phys. **B348**, 435–456 (1991).
- [8] T. Ekedahl, S. Lando, M. Shapiro, A. Vainshtein, *Hurwitz numbers and intersections on moduli spaces of curves*, Invent. Math. **146**, 297–327 (2001).
- [9] B. Eynard, *Topological expansion for the 1-hermitian matrix model correlation functions*, arXiv:hep-th/0407261.
- [10] B. Eynard, *Recursion between volumes of moduli spaces*, arXiv:0706.4403 [math-ph].
- [11] B. Eynard, *All order asymptotic expansion of large partitions*, arXiv:0804.0381 [math-ph].
- [12] B. Eynard, M. Mariño and N. Orantin, *Holomorphic anomaly and matrix models*, Journal of High Energy Physics **06** 058, (2007) [arXiv:hep-th/0702110].
- [13] B. Eynard and N. Orantin, *Invariants of algebraic curves and topological expansion*, Communications in Number Theory and Physics **1**, 347–452 (2007).
- [14] B. Eynard and N. Orantin, *Weil-Petersson volume of moduli spaces, Mirzakhani’s recursion and matrix models*, arXiv:0705.3600 [math-ph].
- [15] C. Faber and R. Pandharipande, *Hodge integrals and Gromov-Witten theory*, Invent. Math. **139**, 173–199 (2000).
- [16] C. Faber and R. Pandharipande, *Hodge integrals, partition matrices, and the λ_g conjecture*, Ann. of Math. **157**, 97–124 (2003).
- [17] I.P. Goulden and D.M. Jackson, *Transitive factorisations into transpositions and holomorphic mappings on the sphere*, Proc. A.M.S., **125**, 51–60 (1997).
- [18] I.P. Goulden, D.M. Jackson and A. Vainshtein, *The number of ramified coverings of the sphere by the torus and surfaces of higher genera*, Ann. of Comb. **4**, 27–46 (2000).
- [19] I.P. Goulden, D.M. Jackson and R. Vakil, *The Gromov-Witten potential of a point, Hurwitz numbers, and Hodge integrals*, Proc. London Math. Soc. **83:3**, 563–581 (2001).
- [20] I.P. Goulden, D.M. Jackson and R. Vakil, *A short proof of the λ_g -conjecture without Gromov-Witten theory: Hurwitz theory and the moduli of curves*, arXiv:math/0604297v1 [math.AG] (2006).
- [21] T. Graber, R. Vakil, *Hodge integrals and Hurwitz numbers via virtual localization*, Compositio Math. **135**, 25–36 (2003).
- [22] T. Graber, R. Vakil, *Relative virtual localization and vanishing of tautological classes on moduli spaces of curves*, Duke Math. J. **130**, 1–37 (2005).
- [23] A. Hurwitz, *Über Riemann’sche Flächen mit gegebene Verzweigungspunkten*, Mathematische Annalen **39**, 1–66 (1891).
- [24] M. Kazarian, *KP hierarchy for Hodge integrals*, arXiv:0809.3263.
- [25] M. Kazarian, S. Lando, *An algebro-geometric proof of Witten’s conjecture*, J. Amer. Math. Soc. **20**, 1079–1089 (2007).
- [26] Y.S. Kim and K. Liu, *A simple proof of Witten conjecture through localization*, preprint arXiv:math/0508384 [math.AG] (2005).
- [27] M. Kontsevich, *Intersection theory on the moduli space of curves and the matrix Airy function*, Commun. Math. Phys. **147**, 1–23 (1992).
- [28] A.M. Li, G. Zhao, and Q. Zheng, *The number of ramified coverings of a Riemann surface by Riemann surface*, Commun. Math. Phys. **213**, 685–696 (2000).
- [29] C.-C. M. Liu, *Formulae of one-partition and two-partition Hodge Integrals*, Geom. & Top. Monographs **8**, 105–128 (2006).
- [30] C.-C. M. Liu, K. Liu, J. Zhou, *A proof of a conjecture of Mariño-Vafa on Hodge Integrals*, J. Differential Geom. **65**, no. 2, 289–340 (2003).
- [31] K. Liu and H. Xu, *A simple proof of Mirzakhani’s recursion formula of Weil–Petersson volumes*, arXiv:0705.2086 [math.AG].
- [32] M. Mariño, *Chern-Simons theory, matrix models, and topological strings*, Oxford University Press, 2005.
- [33] M. Mariño, *Open string amplitudes and large order behavior in topological string theory*, Journal of High Energy Physics **03** 060, (2008).
- [34] A. Mironov and A. Morozov, *Virasoro constraints for Kontsevich-Hurwitz partition function*, arXiv:0807.2843.
- [35] M. Mirzakhani, *Simple geodesics and Weil-Petersson volumes of moduli spaces of bordered Riemann surfaces*, Invent. Math. **167**, 179–222 (2007).
- [36] M. Mirzakhani, *Weil-Petersson volumes and intersection theory on the moduli space of curves*, J. Amer. Math. Soc. **20**, 1–23 (2007).
- [37] M. Mulase and B. Safnuk, *Mirzakhani’s recursion relations, Virasoro constraints and the KdV hierarchy*, Indian J. Math. **50**, 189–228 (2008).

- [38] M. Mulase and N. Zhang, *Polynomial recursion formula for linear Hodge integrals*, Communications in Number Theory and Physics **4** No.2, 267–294 (2010).
- [39] A. Okounkov, *Random matrices and random permutations*, International Mathematics Research Notices **2000**, 1043–1095 (2000).
- [40] A. Okounkov, *Toda equations for Hurwitz numbers*, Math. Res. Lett. **7**, 447 (2000) [arXiv:math.AG/0004128].
- [41] A. Okounkov and R. Pandharipande, *Gromov-Witten theory, Hurwitz numbers, and matrix models, I*, Proc. Symposia Pure Math. **80**, 325–414 (2009).
- [42] A. Okounkov and R. Pandharipande, *The equivariant Gromov-Witten theory of \mathbb{P}^1* , math.AG/0207233 (2002).
- [43] R. Vakil, Harvard Thesis 1997.
- [44] E. Witten, *Two dimensional gravity and intersection theory on moduli space*, Surveys in Differential Geometry **1**, 243–310 (1991).
- [45] J. Zhou, *Hodge integrals, Hurwitz numbers, and symmetric groups*, preprint, math.AG/0308024.

SERVICE DE PHYSIQUE THÉORIQUE DE SACLAY, GIF-SUR-YVETTE, F-91191 CEDEX, FRANCE
E-mail address: `bertrand.eynard@cea.fr`

DEPARTMENT OF MATHEMATICS, UNIVERSITY OF CALIFORNIA, DAVIS, CA 95616–8633
E-mail address: `mulase@math.ucdavis.edu`

DEPARTMENT OF MATHEMATICS, CENTRAL MICHIGAN UNIVERSITY, MOUNT PLEASANT, MI 48859
E-mail address: `brad.safnuk@cmich.edu`